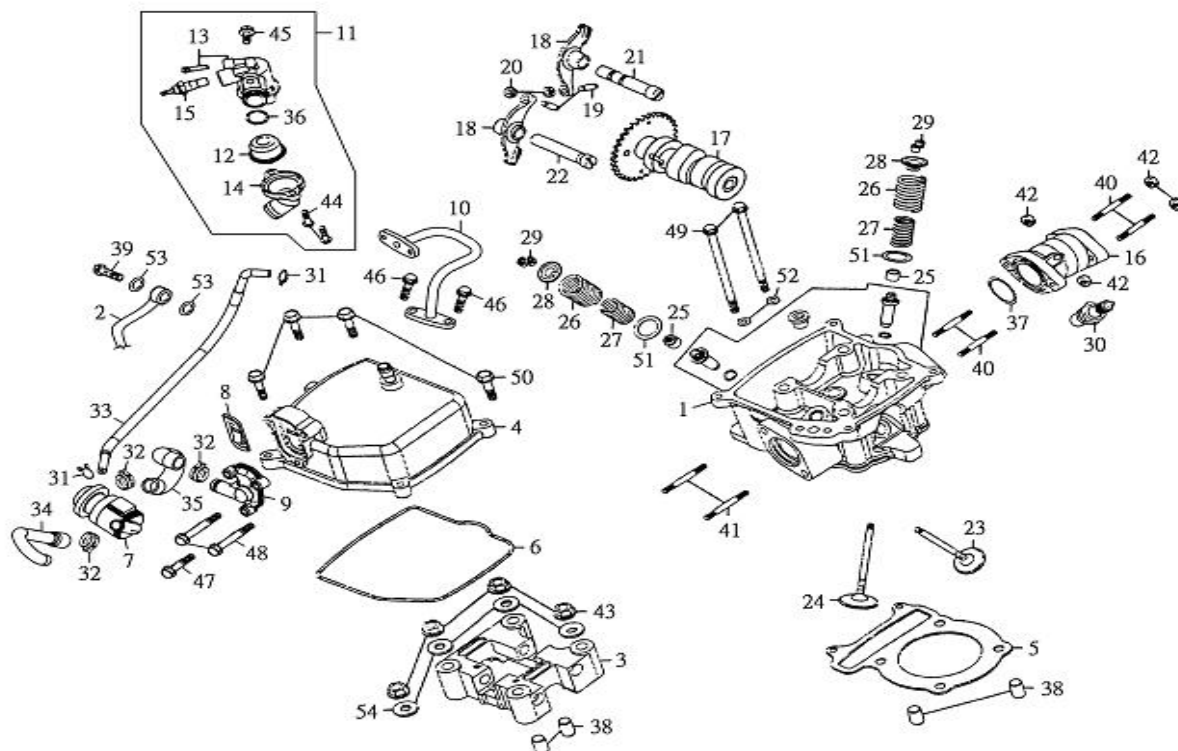


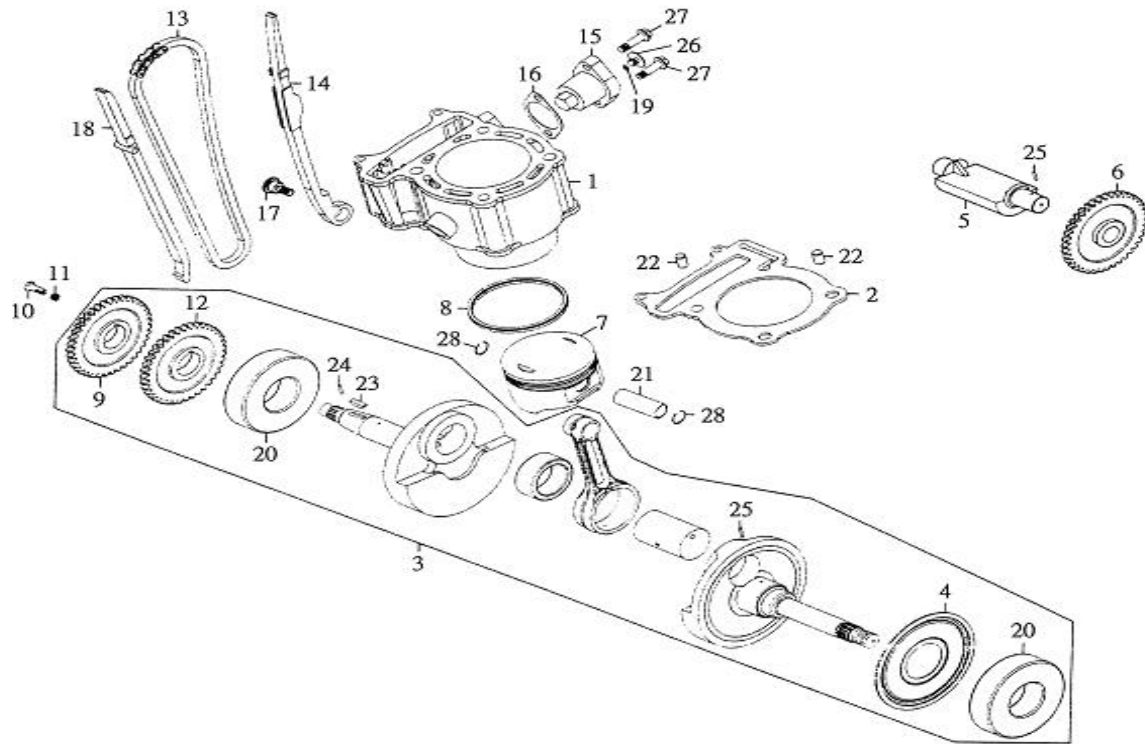
NO	PARTS NO.	PARTS NAME	Q'TY
1	12638-KHB-00	CLIP 2*100	1
2	15111-KHB-00	CRANK CASE COMP. L	1
3	15211-KHB-00	CRANK CASE COMP. R	1
4	15251-KHB-00	GASKET CRANK CASE	1
5	15411-KHB-00	COVER LEFT	1
6	15481-KHB-00	GASKET L. COVER	1
7	15541-KHB-00	CLAMPER WIRE HARNESS	2
8	15127-KHB-00	SWITCH.GEAR CHANGE	1
9	61920-CBT-00	CONNECTOR,OIL COOLING HOLE	1
10	93110-25408	OIL SEAL 25*40*8	1
11	93110-27427	OIL SEAL 27*42*7	1
12	93310-202616	BEARING NEEDLE 20*26*16	1
13	93320-204714	BEARING BALL RADIAL 6024	1
14	93320-205215	BEARING BALL RADIAL 6304	1
15	93320-254712	BEARING BALL RADIAL 6005LLU	1
16	93320-255215	BEARING BALL RADIAL 6205	1
17	93320-256217	BEARING BALL RADIAL 6305	1
18	94410-10016	DOWEL PIN 10*16	4
19	94521-12000	BALL STEEL 12	1
20	94716-12032-C	BOLT,UNION 12*32	2
21	94716-14021-C	BOLT SEAT BALL STOPPER	1
22	94717-08209-C	BOLT A STUD 8*209	2
23	94717-08219-C	BOLT B STUD 8*218.5	2
24	96411-06010-C	SOCKET BOLT 6*10	1
25	96411-06012-C	BOLT FLANGE 6*12	3
26	96411-06028-C	BOLT FLANGE 6*28	8
27	96411-06040-C	BOLT FLANGE 6*40	2
28	96411-06050-C	BOLT FLANGE 6*50	4
29	97201-061820-B	PLATE BRG HOLD 6*18*2.0	2
30	97230-122011	WASHER 12*20*1.1	4
31	97230-142310	WASHER 14.2*22.7*1.0	1
32	97501-12024-K	SPRING BOLT SEAT INNER	1
33	93110-14225	OIL SEAL 14*22*5	1
34	93210-22176	O-RING 17.6*2.2	1
35	97012-47020-K	CIR CLIP IN 47	1
36	15417-KHB-00	CAP,LEFT COVER ASS'Y	1
37	15482-KHB-00	CAP,LEFT COVER GASKET	1

38	94410-08014	DOWEL PIN 8*14	2
39	96411-06025-C	BOLT FLANGE 6*25	3
40	96411-06032-C	BOLT FLANGE 6*32	2
41	96510-06010-C	BOLT SOCKET 6*10	2

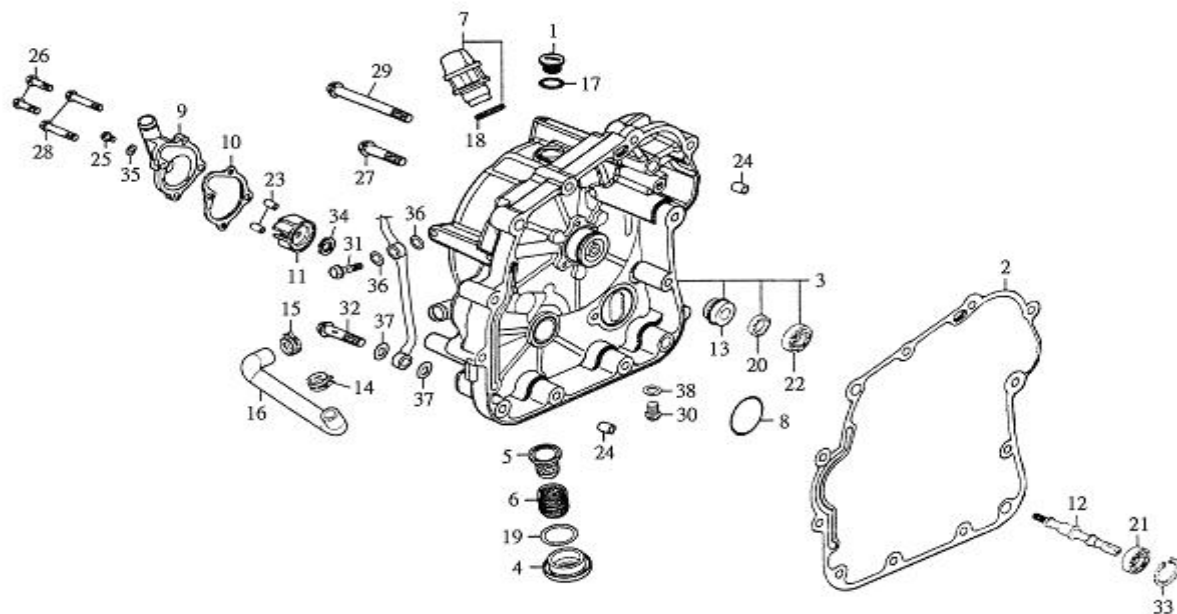


NO	PARTS NO.	PARTS NAME	Q'TY
1	11121-KHB-00	HEAD COMP. CYLINDER	1
2	11122-KHB-00	PIPE COMP. OIL	1
3	11131-KHB-00	HOLDER COMP. CAM SHAFT	1
4	11141-KHB-00	COVER COMP. CYLINDER HEAD	1
5	11181-KHB-00	GASKET CYLINDER HEAD	1
6	11191-KHB-00	GASKET HEAD COVER	1
7	13413-KHB-00	AICV. ASS'Y	1
8	13415-KHB-00	REED VALVE COMP	1
9	13416-KHB-00	COVER REED VALVE	1
10	13417-KHB-00	PIPE COMP AIR	1
11	13460-KHB-00	THERMOSTAT ASSY.	1
12	13461-KHB-00	THERMOSTAT	1
13	13462-KHB-00	CASE COMP. THERMOSTAT	1
14	13463-KHB-00	COVER THERMOSTAT	1
15	13464-KHB-00	THERMOSTAT. UNIT ASSY.	1
16	13555-KHB-00	PIPE COMP. INLET	1
17	14110-KHB-00	SHAFT COMP. CAM	1
18	14431-KHB-00	ARM VALVE ROCKER	2
19	14436-KHB-00	SCREW TAPPET ADJUSTING	2
20	14437-KHB-00	NUT TAPPET ADJUSTING	2
21	14450-KHB-00	SHAFT COMP. IN ROCKER ARM	1
22	14452-KHB-00	SHAFT EX ROCKER	1
23	14711-KHB-00	VALVE INLET	1
24	14721-KHB-00	VALVE EXHAUST	1
25	14731-KHB-00	SEAL VALVE STEM	2
26	14751-KHB-00	SPRING VALVE OUTER	2
27	14761-KHB-00	SPRING VALVE INNER	2
28	14771-KHB-00	RETAINER VALVE SPRING	2
29	14781-KHB-00	COTTER VALVE	4
30	62210-KHB-00	SPARK PLUG DPR (DR8EA)	1
31	90210-10008	CLIP	2
32	90210-120017	CLIP	3

33	90310-35465	HOSE 3.5*8.5*465	1
34	90310-80170	HOSE 8*13*170	1
35	90310-140160	HOSE 14*19*160	1
36	93210-19178	O-RING 17.8*1.9	1
37	93210-30335	O-RING 33.5*3	1
38	94410-10016	DOWEL PIN 10*16	4
39	94716-08025-R	BOLT,UNION 8*25	1
40	94717-06028-B	BOLT STUD 6*28	4
41	94717-08032-B	BOLT STUD 8*32	2
42	95401-061006-C	NUT HEX 6MM	4
43	95401-081208-C	NUT FLANGE 8MM	4
44	96411-06016-B	BOLT FLANGE 6*16	2
45	96411-06018-B	BOLT FLANGE 6*18	1
46	96411-06020-B	BOLT FLANGE 6*20	2
47	96411-06025-B	BOLT FLANGE 6*25	1
48	96411-06040-B	BOLT FLANGE 6*40	2
49	96411-06100-C	BOLT FLANGE 6*100	2
50	96414-06025-C	BOLT FLANGE 6*25	4
51	97201-172308	SEAT VALVE SPRING OUTER 16.8*23*0.8	2
52	97230-061410	WASHER 6*13.5*1.0	2
53	97230-081410	WASHER 8*14*1.0	2
54	97230-081617	WASHER 8*16*1.7	4
55	13418-KHB-00	GASKET COVER REED VALVE	1

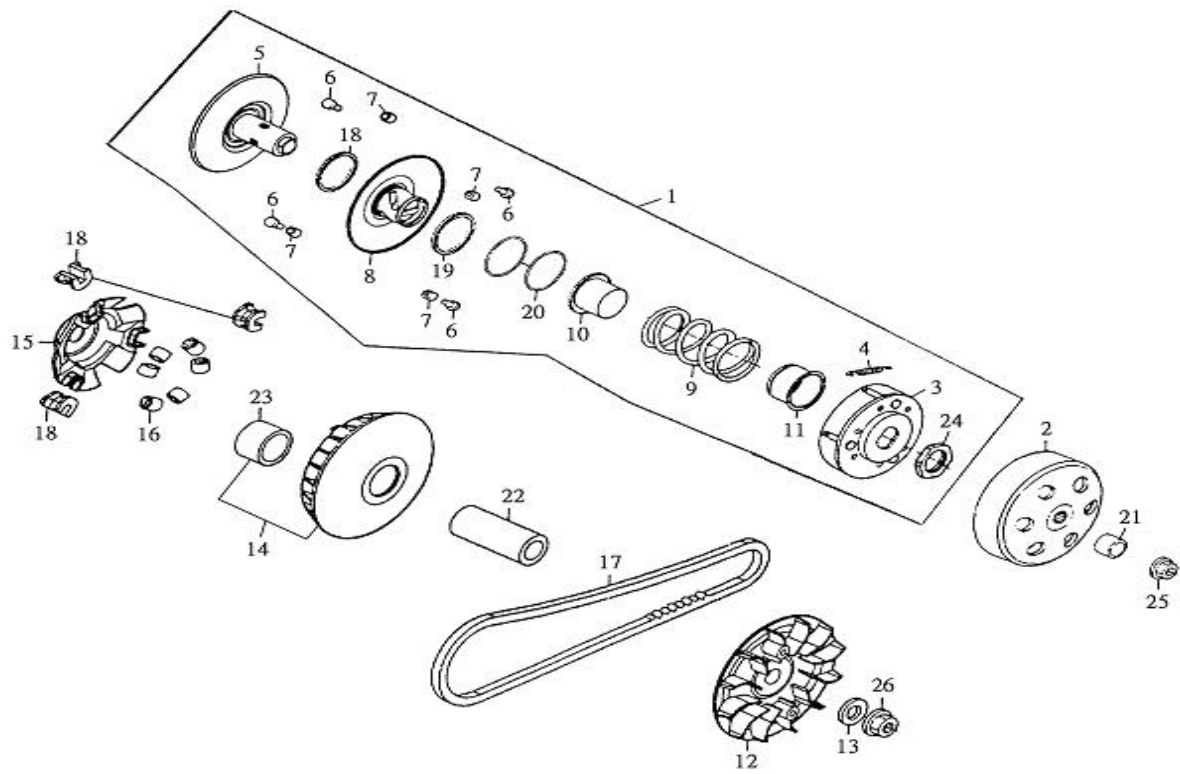


NO	PARTS NO.	PARTS NAME	Q'TY
1	11111-KHB-00	CYLINDER COMP.	1
2	11151-KHB-00	GASKET CYLINDER	1
3	11400-KHB-00	CRANK SHAFT COMP.	1
4	11423-KHB-00	GEAR BALANCE DRIVE	1
5	11424-KHB-00	SHAFT BALANCER	1
6	11425-KHB-00	GEAR BALANCE DRIVEN	1
7	11631-KHB-00	PISTON	1
8	11636-KHB-00	RING SET PISTON	1
9	13124-KHB-00	GEAR OIL PUMP DRIVE	1
10	13321-KHB-00	OIL THROUGH	1
11	13324-KHB-00	SPRING OIL THROUGH	1
12	14311-KHB-00	GEAR TIMING	1
13	14501-KHB-00	CHAIN CAM	1
14	14510-KHB-00	TENSIONER CAM CHAIN	1
15	14520-KHB-00	LIFTER ASSY. TENSIONER	1
16	14523-KHB-00	GASKET TENSIONER LIFTER	1
17	14530-KHB-00	PIVOT CAM CHAIN TENSIONER	1
18	14560-KHB-00	GUIDE COMP. CAM CHAIN	1
19	93210-15095	O-RING 1.5*9.5	1
20	93320-358021	BEARING BALL RADIAL	2
21	93510-121757	PIN PISTON	1
22	94410-10016	DOWEL PIN 10*16	2
23	94420-14025	WOODRUFF KEY 25*14	1
24	94510-20012	ROLLER 2*11.8	1
25	94510-40008	ROLLER 4*8	1
26	96316-06006-C	BOLT SPECIAL 6*6	1
27	96411-06022-C	BOLT FLANGE SHF 6*22	2
28	97050-10017	CLIP PISTON PIN 17MM	2
29	94510-40005	ROLLER 4*5	1

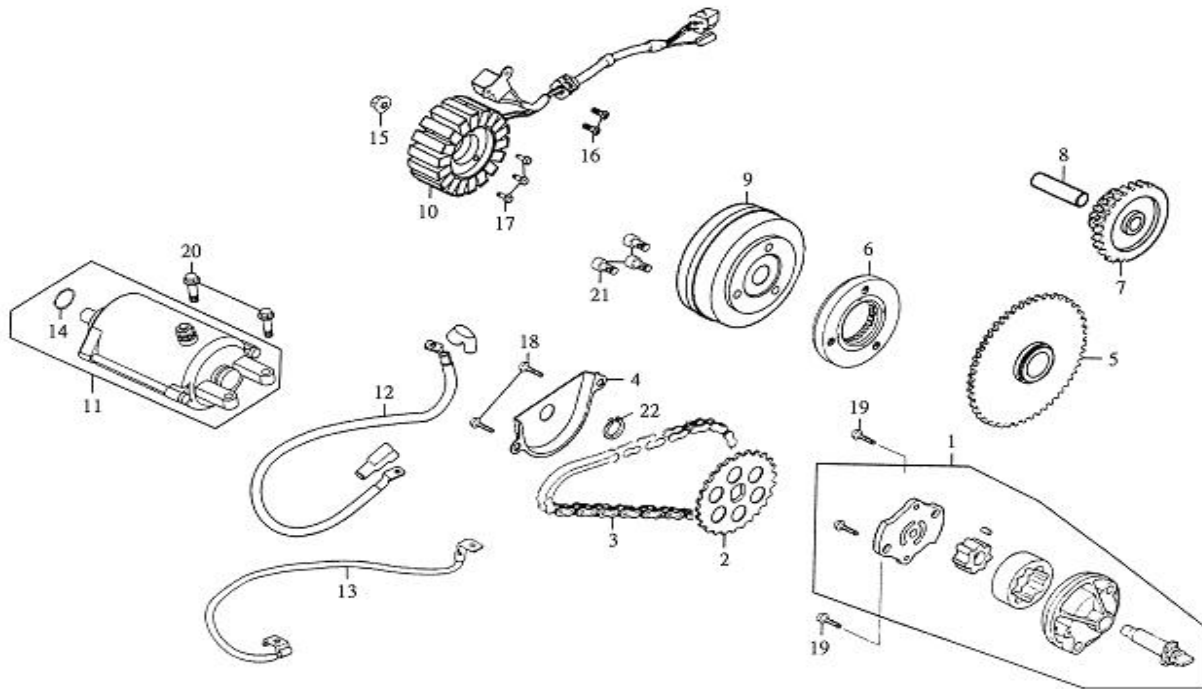


NO	PARTS NO.	PARTS NAME	Q'TY
1	12655-KHB-00	CAP ACG	1
2	15221-KHB-00	GASKET R. COVER	1
3	15511-KHB-00	COVER COMP. R. CRANK CASE	1
4	15533-KHB-00	HOLE CAP TAPPET ADJUSTING	1
5	15536-KHB-00	SCREEN OIL FILTER	1
6	15538-KHB-00	SPRING OIL FILTER SCREEN	1
7	15561-KHB-00	GAUGE OIL LEVEL ASSY.	1
8	19210-KHB-00	WATER PUMP ASSY.	1
9	19211-KHB-00	COVER WATER PUMP	1
10	19212-KHB-00	GASKET WATER PUMP	1
11	19213-KHB-00	IMPELLER WATER PUMP	1
12	19214-KHB-00	SHAFT WATER PUMP	1
13	19215-KHB-00	SEAL MECHANICAL	1
14	90211-120023	CLIP	2
15	90262-100027	CLIP	1
16	90310-140300	HOSE	1
17	93210-25138	O-RING 13.8*2.5	1
18	93210-30180	O-RING 18*3	1
19	93210-32308	O-RING 30.8*3.2	1
20	93310-12205	OIL SEAL 12*20*5	1
21	93320-10268	BEARING BALL RADIAL 6000	1
22	93320-12246	BEARING BALL RADIAL 6901	1
23	94410-08014	DOWEL PIN 8*14	2
24	94410-10016	DOWEL PIN 10*16	2
25	96411-06010-B	BOLT FLANGE 6*10	1
26	96411-06024-B	BOLT FLANGE 6*24	2
27	96411-06045-C	BOLT FLANGE 6*45	2
28	96411-06055-B	BOLT FLANGE 6*55	2
29	96411-06135-C	BOLT FLANGE 6*125	6
30	96414-12015-C	BOLT FLANGE 12*15	1
31	94716-08025-R	BOLT,UNION 8*25	1
32	94716-12030-R	BOLT,UNION 12*30	1
33	97012-26012	CIR CLIP IN 26	1
34	97201-071312-B	WASHER 7.2*13*1.2	1
35	97230-061110	WASHER 6*10.5*1.0	1
36	97230-081410	WASHER 8*14*1.0	2
37	97230-122011	WASHER 12*20*1.1	2

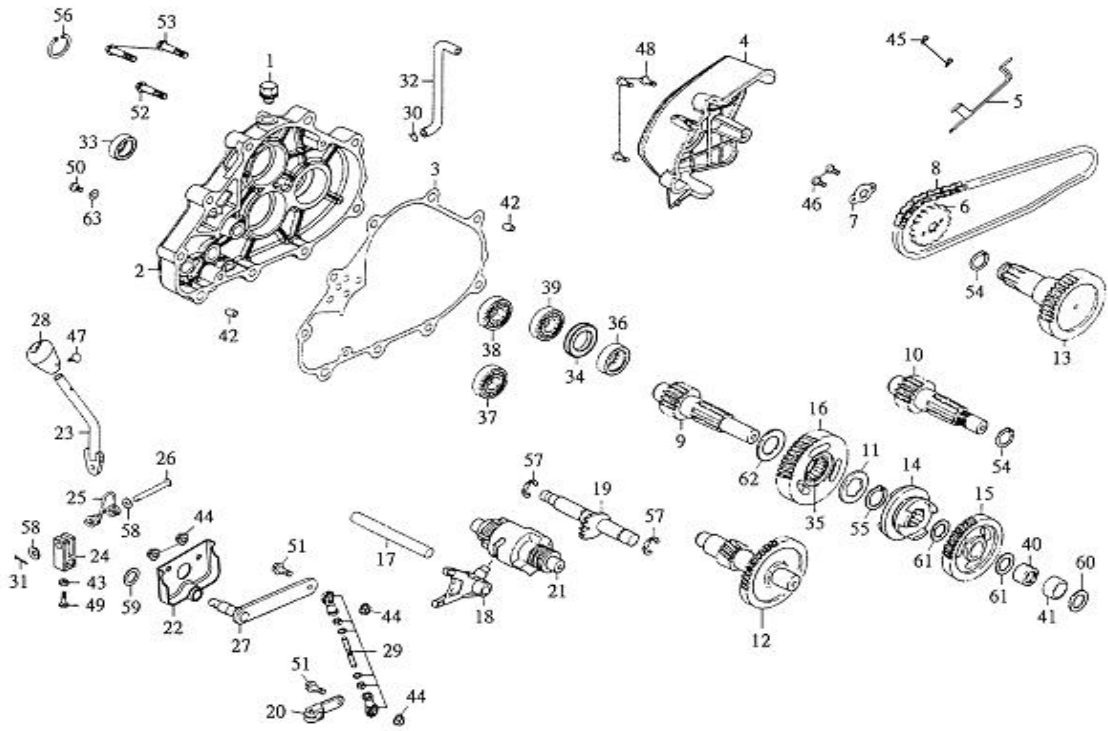
38	97231-122020	WASHER 12*20*2.0	1
39	19216-KHB-00	BODY,WATER PUMP	1
40	93210-28315	O-RING 31.5*2.8	1
41	96411-06035-C	BOLT FLANGE 6*35	2
42	96411-06145-C	BOLT FLANGE 6*145	2



NO	PARTS NO.	PARTS NAME	Q'TY
1	25602-KHB-00	PULLEY SUB. ASSY.	1
2	25611-KHB-00	OUTER CLUTCH	1
3	25620-KHB-00	PLATE ASSY. DRIVE	1
4	25626-KHB-00	SPRING CLUTCH	3
5	25660-KHB-00	FACE ASSY DRIVEN	1
6	25664-KHB-00	PIN ROLLER GUIDE	4
7	25665-KHB-00	ROLLER GUIDE	4
8	25670-KHB-00	FACE COM[P. MOVABLE DRIVEN	1
9	25680-KHB-00	SPRING DRIVEN FACE	1
10	25684-KHB-00	COLLAR SEAL	1
11	25685-KHB-00	COLLAR SPRING	1
12	25712-KHB-00	FACE DRIVE	1
13	25714-KHB-00	WASHER THRUST	1
14	25720-KHB-00	FACE COMP MOVABLE DRIVE	1
15	25723-KHB-00	PLATE RAMP	1
16	25732-KHB-00	ROLLER COMP. WEIGHT	6
17	25743-KHB-00	BELT DRIVE	1
18	25753-KHB-00	PIECE SLIDE	3
19	93110-39474	SEAL DRIVEN FACE	2
20	93210-20450	O-RING PINION CAP 45*2.0	2
21	93510-142521	BOSS DRIVE SHAFT	1
22	93510-192763	BUSHING,DLIDING CLUTCH	1
23	93510-273337	BUSHING,DLIDING SHEAVE	1
24	95201-283804-B	NUT,HEXAGON	1
25	95401-121711-C	NUT, FLANGE	1
26	95401-141914-C	NUT, FLANGE	1
27	25713-KHB-00	PIPE TRANSMITTAL	1

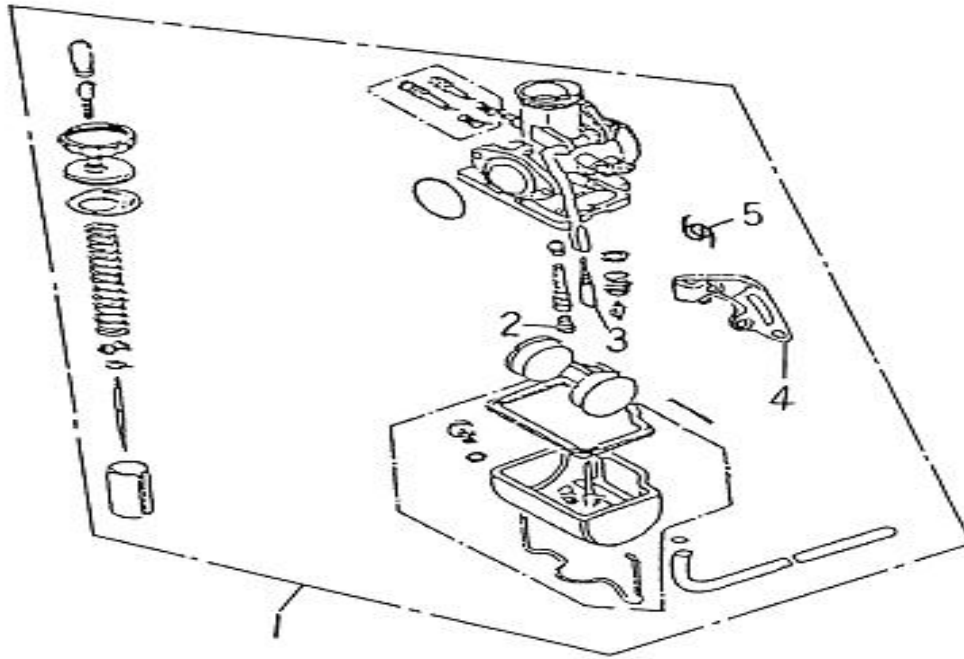


NO	PARTS NO.	PARTS NAME	Q'TY
1	13100-KHB-00	PUMP ASSY. OIL	1
2	13124-KHB-00	SPROCKET OIL PUMP DRIVE	1
3	13131-KHB-00	CHAIN OIL PUMP	1
4	13136-KHB-00	SEPARATER OIL	1
5	23524-KHB-00	GEAR COMP. STARTING CLUTCH	1
6	23570-KHB-00	ONE WAY CLUTCH	1
7	23660-KHB-00	GEAR STARTER REDUCTION	1
8	23663-KHB-00	SHAFT STARTER REDUCTION	1
9	35550-KHB-00	FLYWHEEL COMP.	1
10	35560-KHB-00	STATOR COMP.	1
11	35800-KHB-00	MOTOR UNIT STARTER	1
12	35831-KHB-00	CABLE STARTER MOTOR	1
13	62120-KHB-00	CABLE EARTH	1
14	93210-31244	O-RING 24.4*3.1	1
15	95401-141914-C	NUT FLANGE 14MM	1
16	96310-05016-C	SCREW PAN 5*16	2
17	96411-05032-C	BOLT HEXAGON 5*32	3
18	96411-06012-C	BOLT FLANGE 6*12	2
19	96411-06028-C	BOLT FLANGE 6*28	2
20	96414-06022-C	BOLT FLANGE 6*22	2
21	96510-08015-C	SOCKET BOLT 8*15	3
22	97010-10010-K	CIRCLIP EX10	1

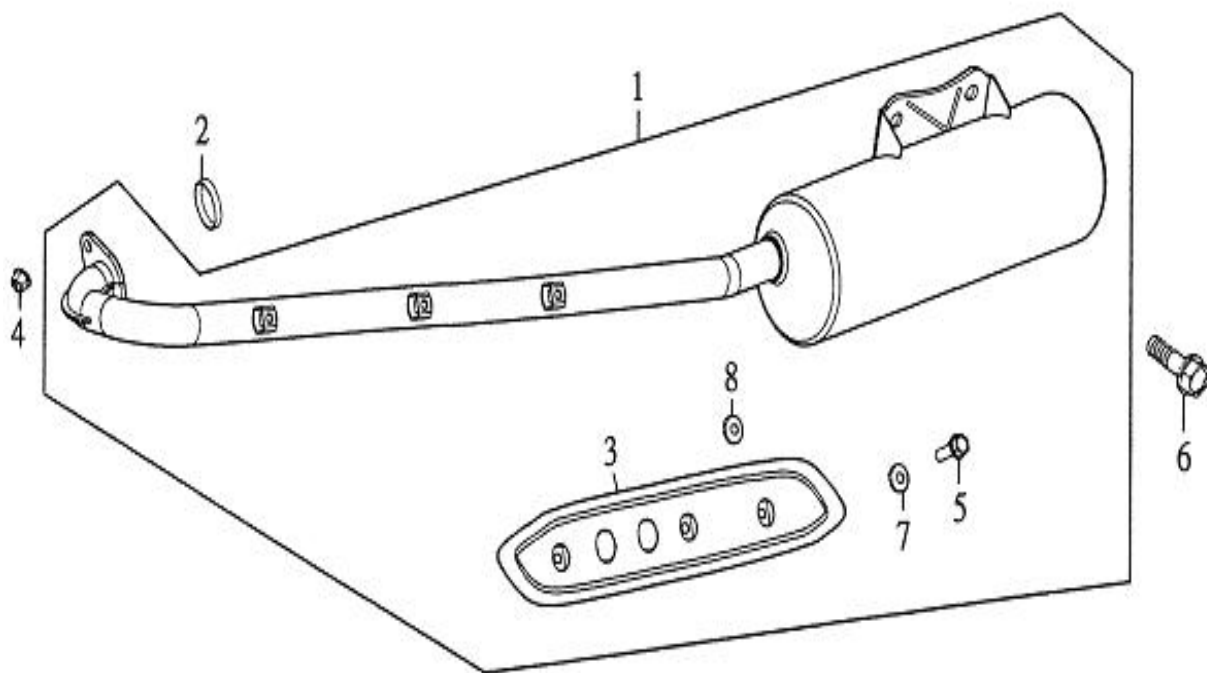


NO	PARTS NO.	PARTS NAME	Q'TY
1	15163-KHB-00	BOLT, FLANGE	1
2	15311-KHB-00	CASE MISSION	1
3	15351-KHB-00	GASKET MISSION CASE	1
4	15421-KHB-00	CHAIN COVER ASS'Y	1
5	15422-KHB-00	STAY CHAIN	1
6	25711-KHB-00	SPROCKET DRIVE 14T	1
7	25716-KHB-00	PLATE FIXING	1
8	25741-KHB-00	CHAIN DRIVE	1
9	26111-KHB-00	SHAFT MAIN	1
10	26112-KHB-00	SHAFT DRIVE	1
11	26118-KHB-00	WASHER SPLINE25MM	1
12	26400-KHB-00	GEAR COMP. COUNTER	1
13	26420-KHB-00	SHAFT FINAL	1
14	42834-KHB-00	SHIFT MAIN	1
15	42837-KHB-00	GEAR FORWARD	1
16	42838-KHB-00	GEAR BACKWARD	1
17	42841-KHB-00	SHAFT GEAR SHIFT FORK GUIDE	1
18	42845-KHB-00	FORK GEAR SHIFT	1
19	42846-KHB-00	SPINDLE ASSY. DRUM SHIFT	1
20	42847-KHB-00	GEAR CHANGE HANDLE	1
21	42851-KHB-00	DRUM ASSY. GEAR SHIFT	1
22	42861-KHB-00	STAY CHANGE HOLDER ASSY.	1
23	42862-KHB-00	REVERSE GEAR LEVER	1
24	42863-KHB-00	HOLDER,REVERSE GEAR LEVER	1
25	42864-QUA-00	SPRING,RETURN	1
26	42865-QUA-00	PIN,LEVER FIXTURE	1
27	42866-KHB-00	SHAFT COMP. CHANGE HANDLE	1
28	42869-QUA-00	LEVER HANDLE ASSY	1
29	42871-KHB-00	ROD ASSY.CHANGE HANDLE	1
30	90211-80014	CLIP B14 TUBE	1
31	90240-18016-B	PIN,COTTER 1.8*16	1
32	90310-105375	TUBE MISSION BREATHER	1

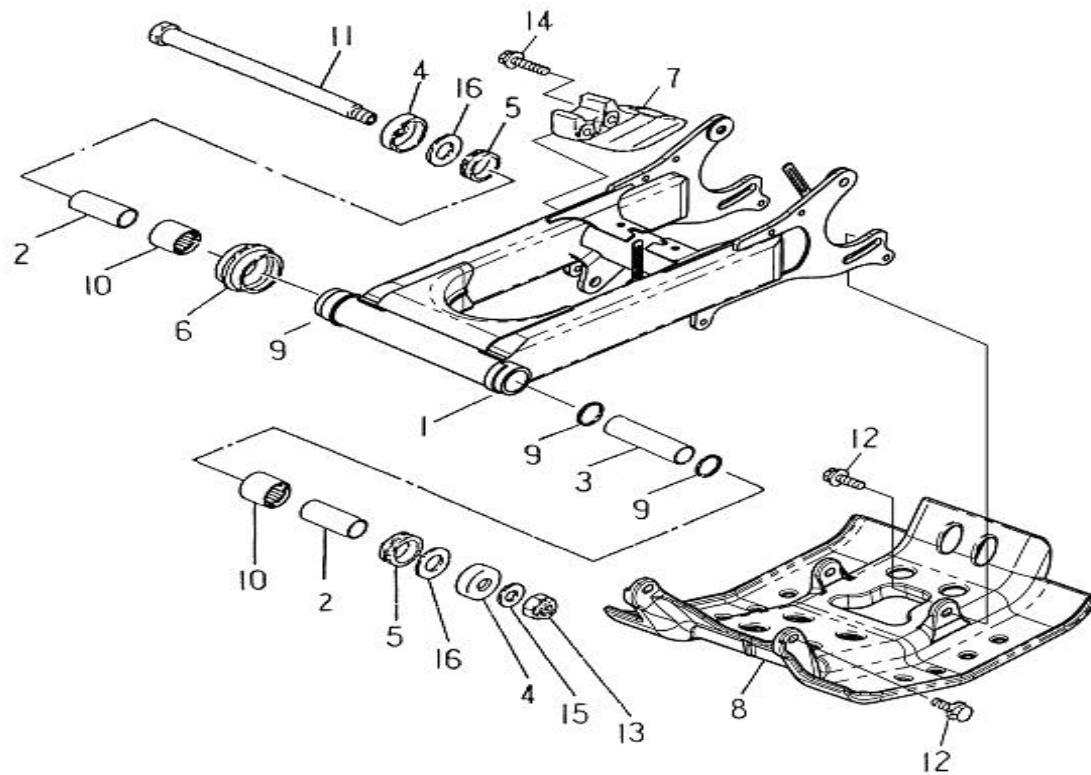
33	93110-14287	OIL SEAL 14*28*7	1
34	93110-30407	OIL SEAL 30*40*7	1
35	93310-253316N	BRG. NEEDLE 25*33*16(NK25/16R)	1
36	93310-304217	BRG. NEEDLE 30*42*17	1
37	93320-204714	BRG. BALL RADIAL 6204	1
38	93320-205215	BRG. BALL RADIAL 6304	1
39	93320-255215	BRG. BALL RADIAL 6205LLU	1
40	93510-202211	COLLAR 20*22*11	1
41	93510-202311	COLLAR 20*23*11	1
42	94410-10016	DOWEL PIN 10*16	2
43	95201-061005-B	NUT,HEXAGON	1
44	95401-081208-C	NUT, FLANGE	4
45	96112-41218-K	SCREW,TAPPING 4*12	2
46	96210-06010-C	BOLT,HEXAGON 6*10	2
47	96310-05014-B	SCREW, PAN HEAD 5*14	1
48	96411-06020-B	BOLT, FLANGE 6*20	3
49	96414-06014-B	BOLT, FLANGE 6*14	1
50	96414-08012-C	BOLT, FLANGE 8*12	1
51	96414-08030-C	BOLT, FLANGE 8*30	2
52	96414-08035-C	BOLT,FLANGE 8*35	7
53	96414-08040-C	BOLT,FLANGE 8*40	2
54	97010-25012-K	CIR CLIP	2
55	97010-28012-K	CIR CLIP	1
56	97010-52020-K	CIR CLIP	1
57	97011-12010-K	CIR CLIP	2
58	97201-081610-B	WASHER,PLATE	2
59	97201-102210-B	WASHER,PLATE	1
60	97201-203310	WASHER,PLATE	1
61	97201-202710	WASHER,PLATE	2
62	97201-254010	WASHER,PLATE	1
63	97230-081625	WASHER,COPPER	1
64	96411-06025-C	BOLT,FLANGE 6*25	1



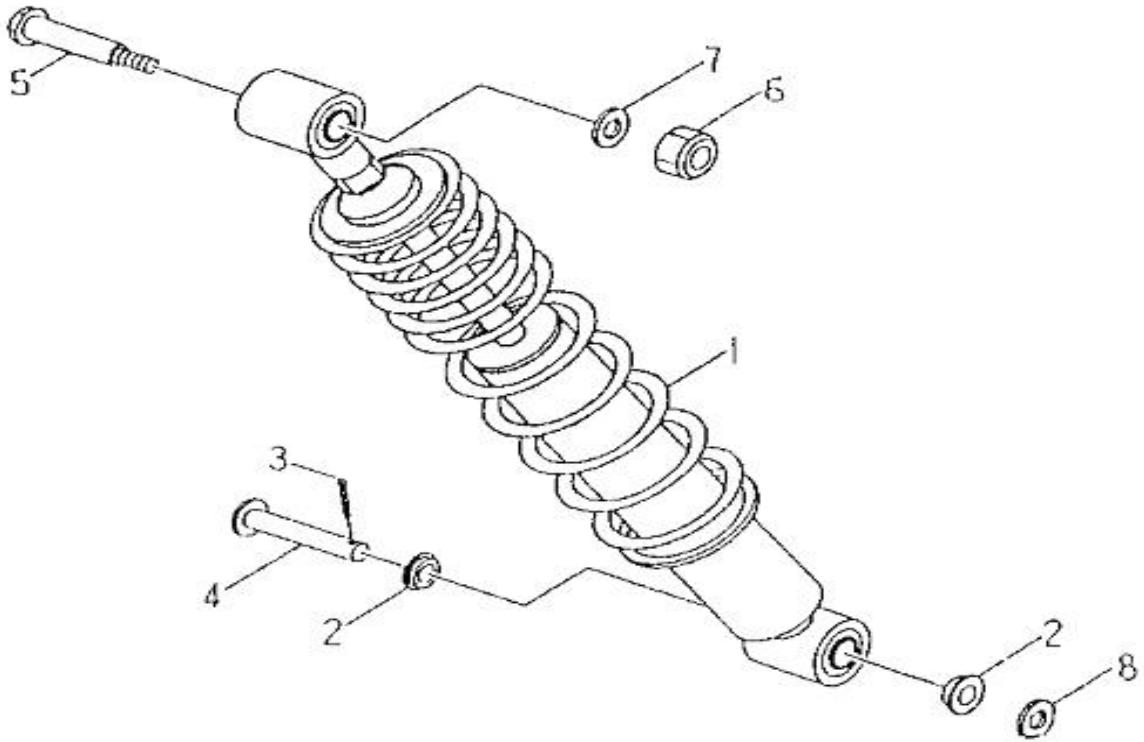
NO	PARTS NO.	PARTS NAME	Q'TY
1	13201-RAM-02	CARBURETOR ASS'Y	1
2	13240-RAM-02	JET, MAIN #90	1
3	13242-RAM-00	JET, SLOW #35	1
4	13276-RAM-00	HOLDER, CHOKE CABLE	1
5	13278-RAM-00	SPRING, TORSION	1



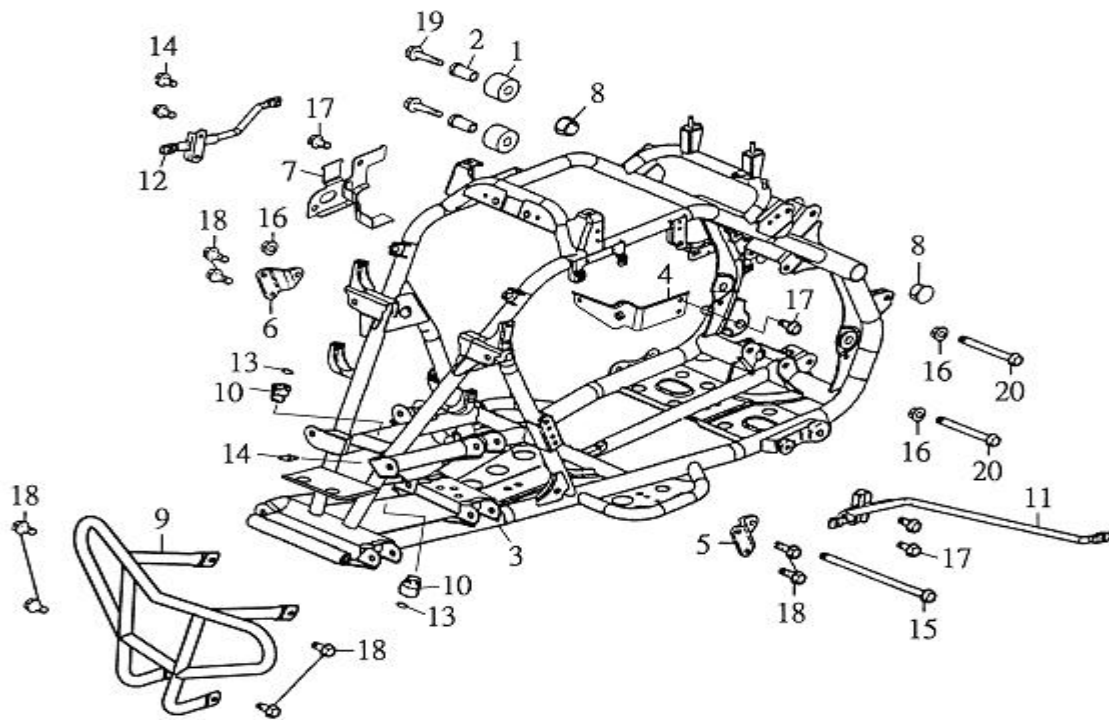
NO	PARTS NO.	PARTS NAME	Q'TY
1	31610-KHB-00	EXHAUST MUFFLER ASSY.	1
2	31613-KHB-00	GASKET EXHAUST PIPE	1
3	31618-KHB-00	PROTECTOR PIPE EXHAUST	1
4	95401-081208-B	NUT,FLANGE	2
5	96218-06022-R	BOLT,FLANGE 6*22	3
6	96414-10030-B	BOLT,FLANGE 10*30	2
7	97210-061720	PACKING PROTECTOR	3
8	97210-061730	PACKING PROTECTOR	3



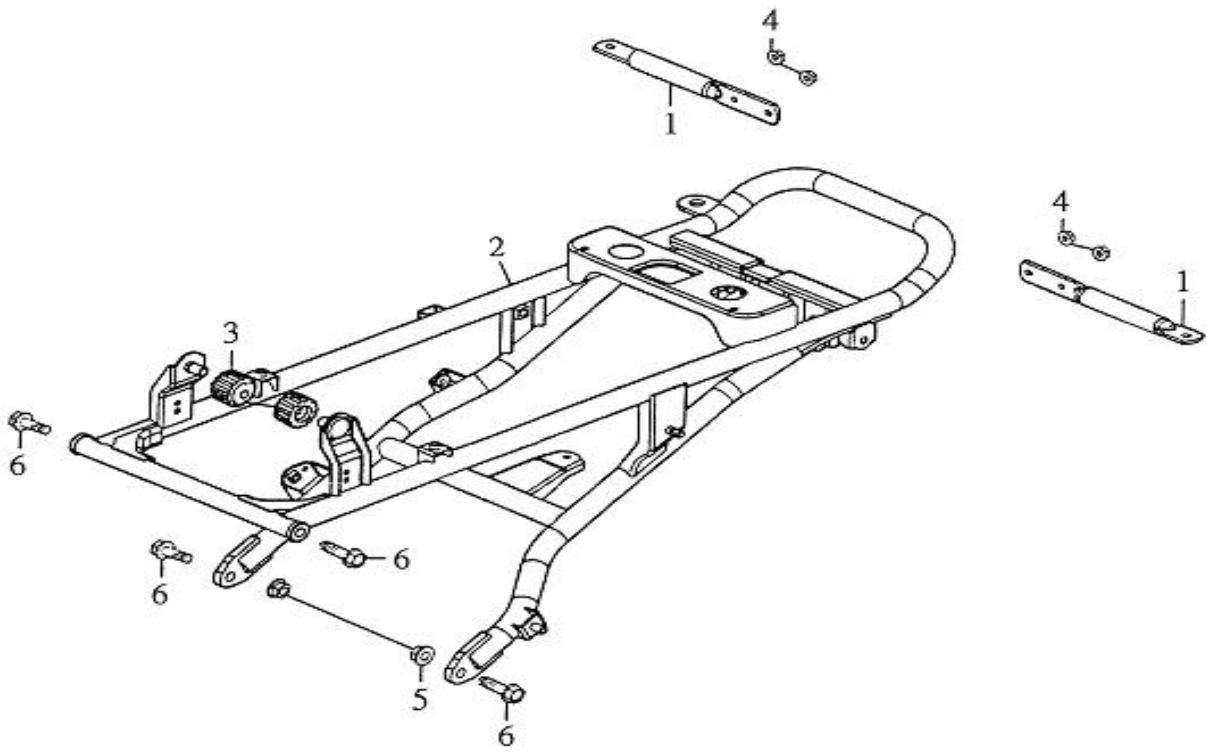
NO	PARTS NO.	PARTS NAME	Q'TY
1	32100-KHB-00	REAR ARM	1
2	32115-RAM-00	BUSH	2
3	32116-KHB-00	SPACER	1
4	32118-RAM-00	COVER,THRUST	2
5	32119-RAM-00	OIL SEAL	2
6	32160-RAM-00	SEAL,GUARD	1
7	32165-RAM-00	SUPPORT,CHAIN	1
8	32190-KHB-00	COVER	1
9	93210-25200	O-RING 2.5*20	2
10	93310-222820	BEARING,NEEDLE ROLLER HK-2220	2
11	94610-15275-B	SHAFT,PIVOT	1
12	94710-08016-B	SCREW	4
13	95301-142212-B	NUT,LOCK 14MM	1
14	96414-08040-B	BOLT,FLANGE	2
15	97201-142820-B	WASHER,PLATE 14.2*28.4*2.0	1
16	97201-243820	WASHER,PLATE	2



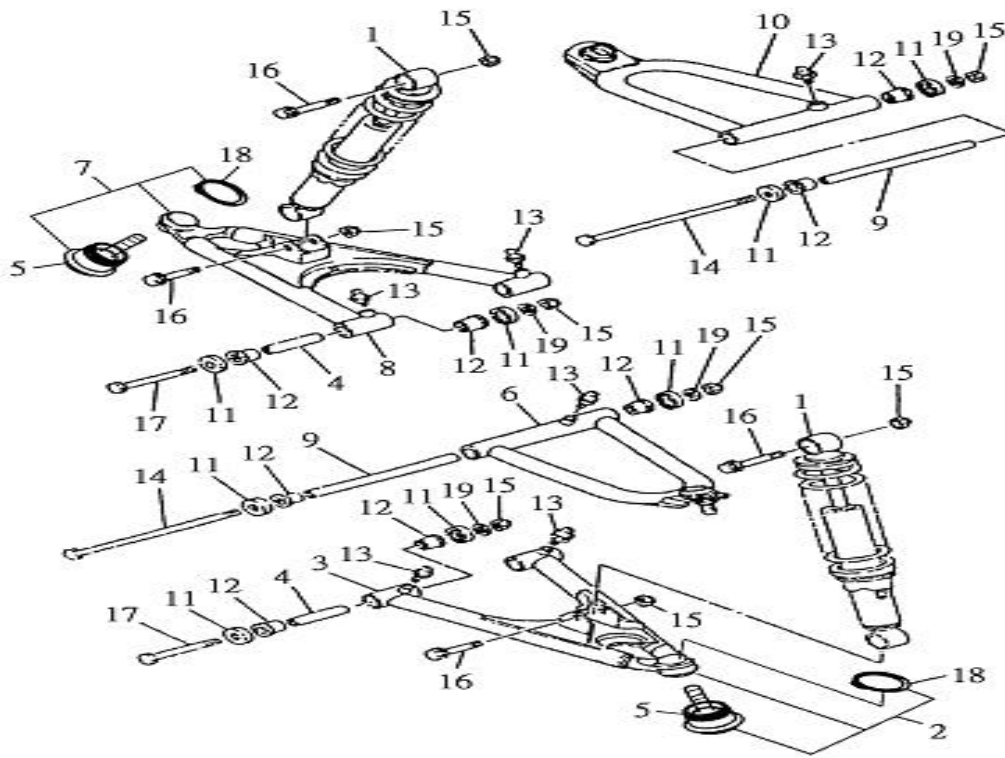
NO	PARTS NO.	PARTS NAME	Q'TY
1	32210-KHB-00	SHOCK ABSORBER ASS'Y,REAR	1
2	32231-RAM-00	COVER,THRUST	2
3	90240-29025-B	PIN.COTTER 2.9*25	1
4	94610-12070-B	PIN,CLEVIS	1
5	94710-10053-B	BOLT	1
6	95311-101710-B	NUT,NYLON	1
7	97201-102220-B	WASHER.PLATE 10.5*22*2	1
8	97201-122223-B	WASHER,PLATE 12.5*22*2.3	1



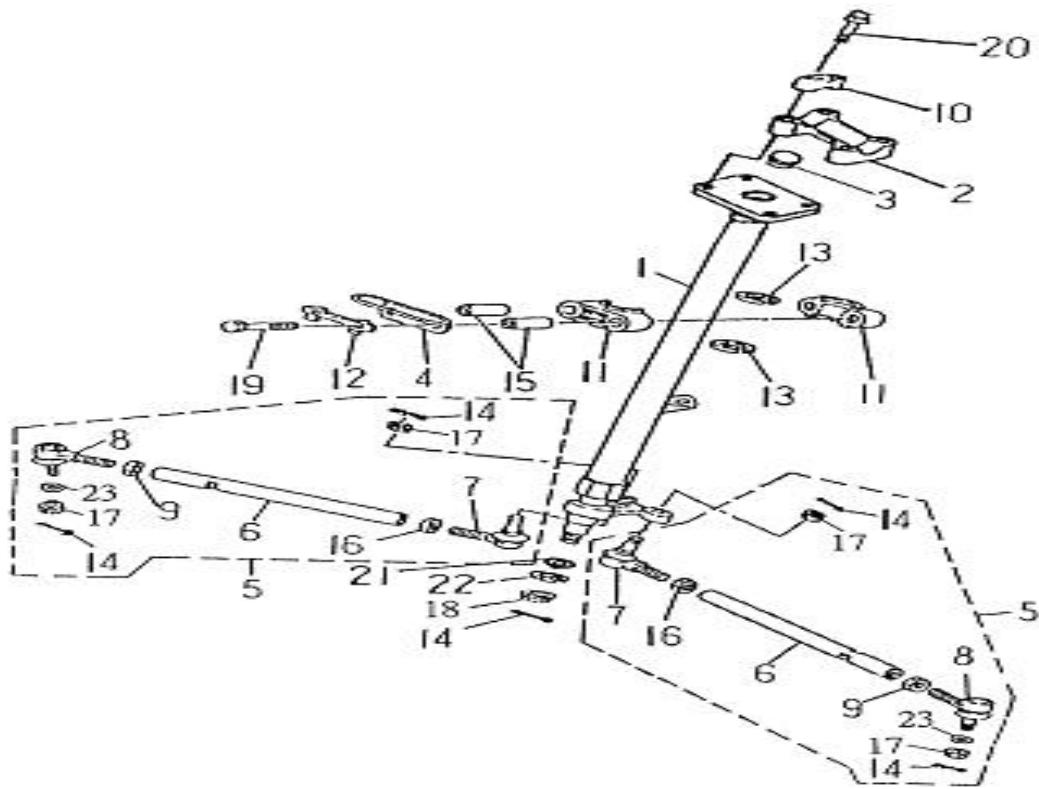
NO	PARTS NO.	PARTS NAME	Q'TY
1	32167-RAM-00	RUBBER CHAIN DRIVE	2
2	32168-RAM-00	COLLAR CHAIN RUBBER	2
3	41110-KHB-00	FRONT FRAME COMP	1
4	41113-KHB-00	STAY CATCH TANK	1
5	41116-KHB-00	BRACKET ENGINE HANGER L	1
6	41117-KHB-00	BRACKET ENGINE HANGER R	1
7	41118-KHB-00	STAY VACUUM VALVE DEVICE	1
8	41154-KHB-00	CAP PIPE	2
9	41601-KHB-00	FRONT BUMPER	1
10	46412-RAM-00	BUSH,SOLID	2
11	51554-KHB-00	STAY L. FRONT COVER	1
12	51556-KHB-00	STAY R. FRONT COVER	1
13	93210-24148	O-RING 2.4*14.8	2
14	94340-06010-B	NIPPLE,GREASE M6*P1.0	1
15	94610-10158-B	BOLT FLANGE 10*158	1
16	95401-101409-B	NUT,FLANGE	3
17	96414-06012-B	BOLT,FLANGE 6*12	8
18	96414-08016-B	BOLT,FLANGE 8*16	8
19	96414-08038-B	BOLT,FLANGE 8*38	2
20	96414-10080-B	BOLT,FLANGE 10*80	2



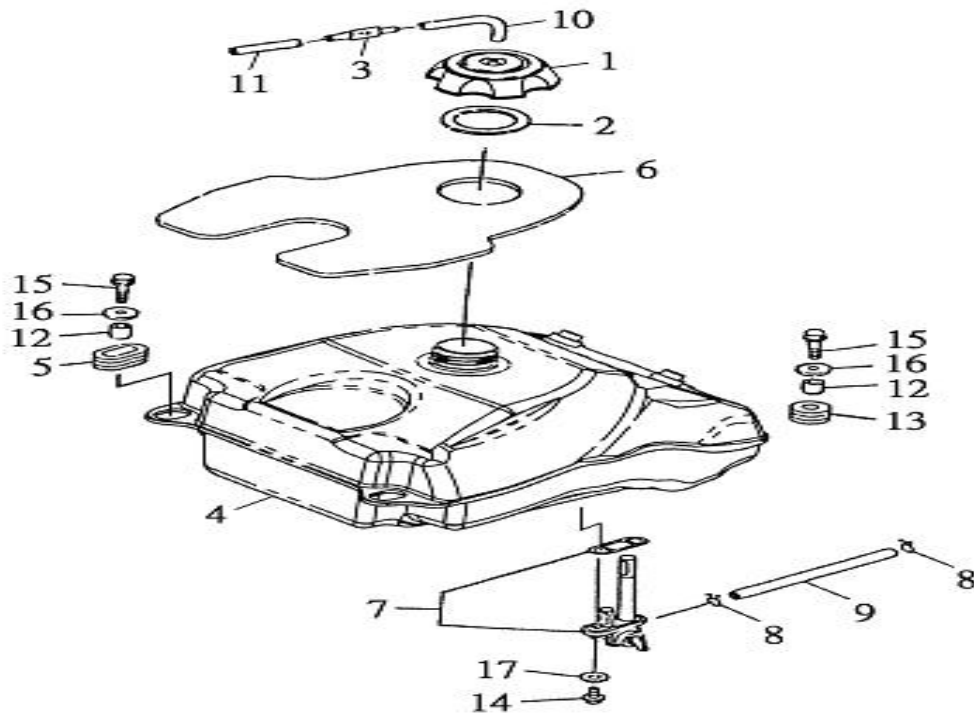
NO	PARTS NO.	PARTS NAME	Q'TY
1	41111-KHB-00	REAR STAY FENDER	2
2	41119-KHB-00	REAR FRAME COMP	1
3	52734-KHB-00	CUSHION FRONT FUEL TANK	2
4	95401-061006-B	NUT U FLANGE	4
5	95401-101409-B	NUT U FLANGE	2
6	96414-10025-B	BOLT FLANGE 10*25	4



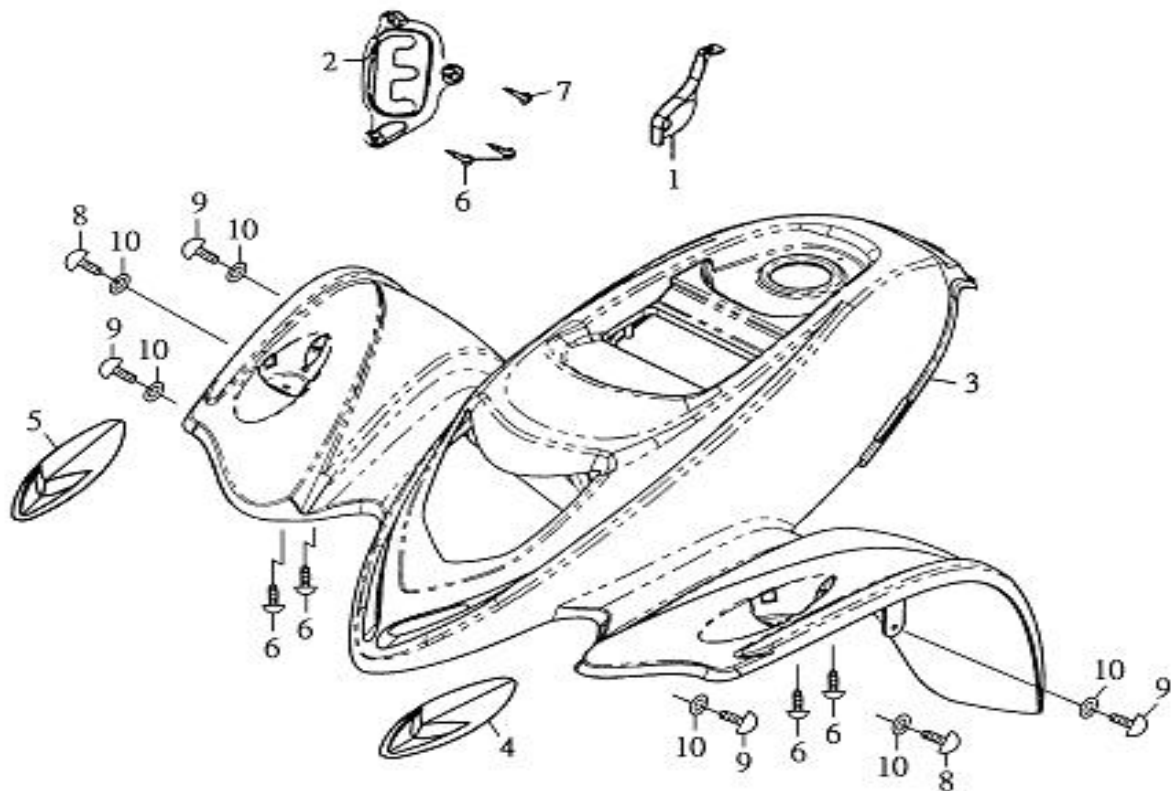
NO	PARTS NO.	PARTS NAME	Q'TY
1	42126-KHB-00	SHOCK ABSORBER ASS'Y	2
2	42160-KHB-00	FRT.LWR,ARM LEFT ASS'Y	1
3	42161-KHB-00	FRT.LWR,ARM LEFT	1
4	42163-RAM-00	COLLAR	4
5	42165-QUA-00	LOWER UNIVERSAL JOINT	2
6	42166-KHB-00	FRT.UPPER,ARM LEFT	1
7	42170-KHB-00	FRT.LWR,ARM RIGHT ASS'Y	1
8	42171-KHB-00	FRT.LWR,ARM RIGHT	1
9	42173-AAM-00	COLLAR	2
10	42176-KHB-00	FRT.UPPER,ARM RIGHT	1
11	42183-RAM-00	COVER,THRUST	12
12	93330-152118	BUSH,SOLID	12
13	94340-06010-B	NIPPLE,GREASE M6*P1.0	6
14	94610-10208-B	SHAFT,PIVOT	2
15	95311-101710-B	NUT,NYLON	10
16	96414-10055-B	BOLT,FLANGE	4
17R	96414-10080-B	BOLT,FLANGE	2
17F	96414-10085-B	BOLT,FLANGE	2
18	97010-30015-K	CIRCLIP ϕ 30	2
19	97201-102020-B	WASHER,PLATE 10.5*20*2	6



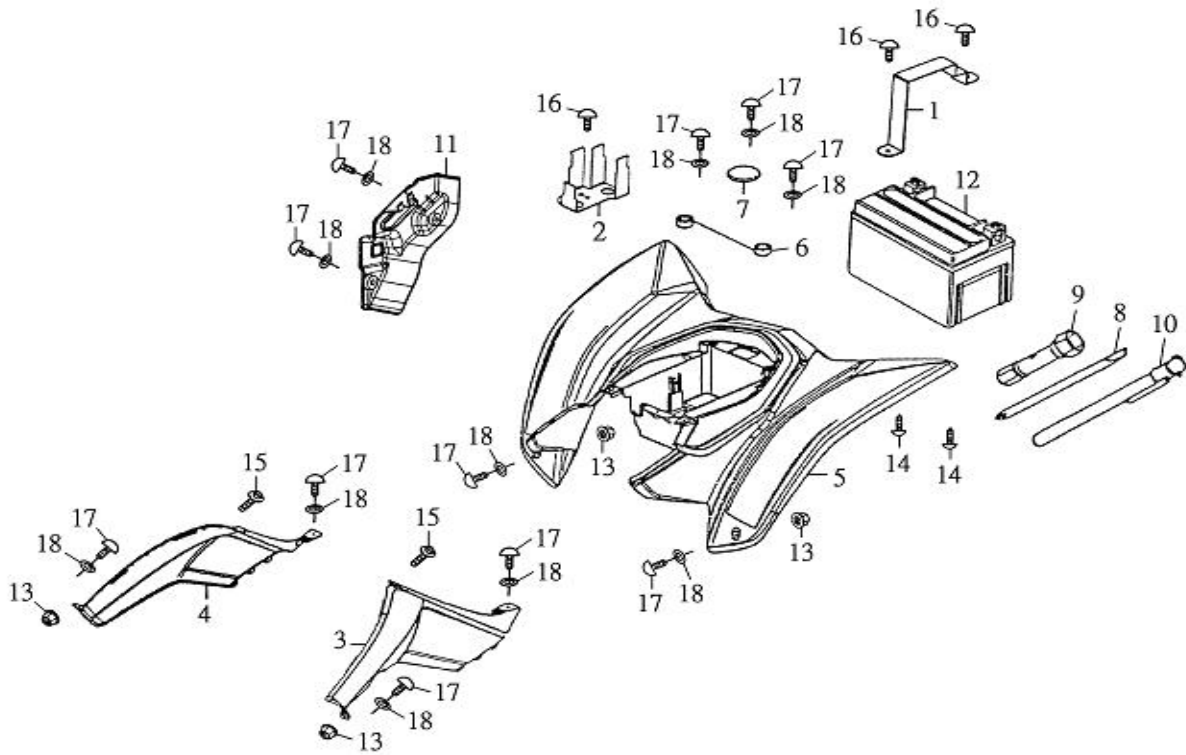
NO	PARTS NO.	PARTS NAME	Q'TY
1	42101-KHB-00	COLUMN,STEERING	1
2	42106-SK9-00	BRIDGE, TOP	1
3	42111-RAM-00	PLUG, TAPER	1
4	42118-RAM-00	BRACKER, STRG LOWER	1
5	42140-KHB-00	ROD, TIE ASS'Y	2
6	42141-KHB-00	ROD, TIE	2
7	42142-RAM-00	JOINT, UNIVERSAL 1	2
8	42143-RAM-00	JOINT, UNIVERSAL 2	2
9	42146-RAM-00	NUT	2
10	46125-RAM-00	HOLDER, HANDLE UPR	2
11	46411-RAM-00	BEARING, STEERING	2
12	46416-RAM-00	WASHER, LOCK	1
13	46417-RAM-00	OIL SEAL	2
14	90240-23020-B	PIN, COTTER 2.3*20	5
15	93510-081442-C	COLLAR	2
16	95201-101408-C	NUT, HEXAGON	2
17	95321-101710-C	NUT, CASTLE	4
18	95401-101409-B	NUT, NYLON	1
19	96210-08060-B	BOLT, HEXAGON	2
20	96414-08050-B	BOLT, FLANGE	4
21	97201-102620-B	WASHER, PLATE	1
22	97301-101720-B	WASHER, SPRING	1
23	97201-102020-B	WASHER, PLATE	2



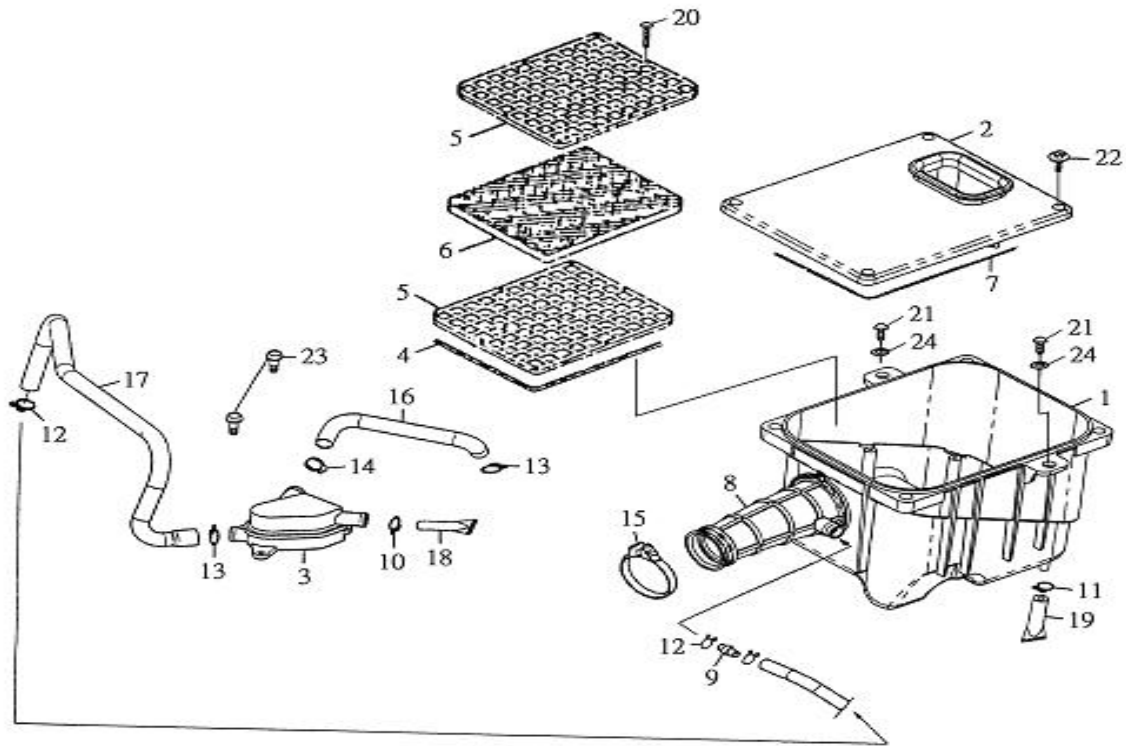
NO	PARTS NO.	PARTS NAME	Q'TY
1	43102-RAM-00	CAP ASS'Y	1
2	43103-RAM-00	CAP WASHER	1
3	43108-SK5-00	CHECK,VALVE	1
4	43110-KHB-00	FUEL TANK	1
5	43151-RAM-00	GROMMET F	2
6	43153-RAM-00	TRIM,COVER PANEL	1
7	43500-CBT-00	FUEL COCK ASS'Y	1
8	90210-12010	CLIP	2
9	90310-50150	HOSE,FUEL	1
10	90310-50050	HOSE 5*8*50	1
11	90310-50390	HOSE 5.8*390	2
12	93510-061015-B	COLLAR F	4
13	93580-102416	GROMMET R	2
14	96318-06012-B	SCREW,PAN HEAD	2
15	96414-06025-B	BOLT,FLANGE	4
16	97201-062220-B	WASHER,PLATE	4
17	97210-061315	WASHER,PLATE	2



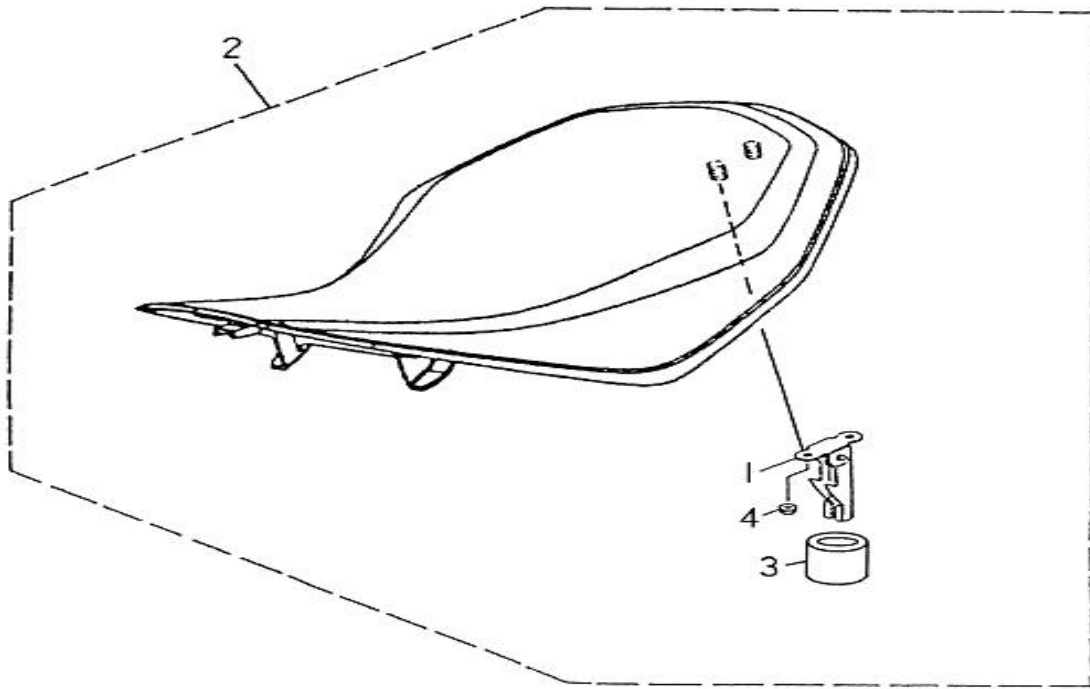
NO	PARTS NO.	PARTS NAME	Q'TY
1	41112-KHB-00	STAY GUIDE COVER	1
2	42868-KHB-00	GUIDE COVER CHANGE HANDLE	1
3	51161-KHB-00	VOVER,FRONT	1
4	55351-QUA-01	FLASHER COVER,FRONT L	1
5	55361-QUA-01	FLASHER COVER,FRONT R	1
6	96112-51216-K	SCREW,TAPPING 5*12	6
7	96112-51616-K	SCREW,TAPPING 5*16	1
8	96318-06012-B	SCREW,PAN HEAD 6*12	2
9	96318-06015-B	SCREW,PAN HEAD 6*15	4
10	97321-061825-B	WASHER,FLANGE	6



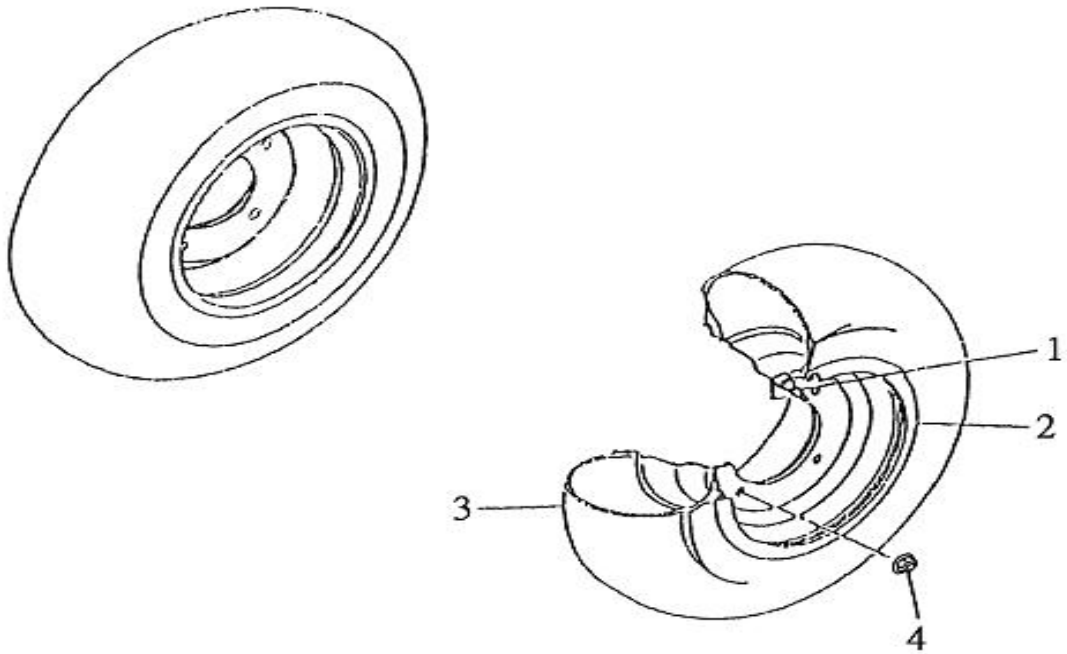
NO	PARTS NO.	PARTS NAME	Q'TY
1	41114-KHB-00	STAY,BATTERY	1
2	41115-KHB-00	STAY,STARTER RELAY SWITCH	1
3	51162-KHB-00	COVER,L SIDE	1
4	51163-KHB-00	COVER,R SIDE	1
5	51171-KHB-00	COVER,SIDE	1
6	52735-KHB-00	RUBBER REAR FENDER	2
7	55552-RAM-00	PLUG	1
8	56120-RAM-00	SCREW DRIVER	1
9	56140-RAM-00	TOOL PLUG	1
10	56190-RAM-00	GAUGE,AIR	1
11	61941-KHB-00	TANK RESERVE COVER	1
12	62100-KHB-00	BATTERY ASS'Y (YTX12-BS)	1
13	95401-061006-B	NUT, FLANGE	4
14	96112-51616-K	SCREW,TAPPING 5*16	2
15	96313-06020-K	SCREW,PAN HEAD WITH WASHER	2
16	96318-06012-B	SCREW,PAN HEAD 6*12	3
17	96318-06015-B	SCREW,PAN HEAD 6*15	11
18	97321-061825-B	WASHER,FLANGE	11



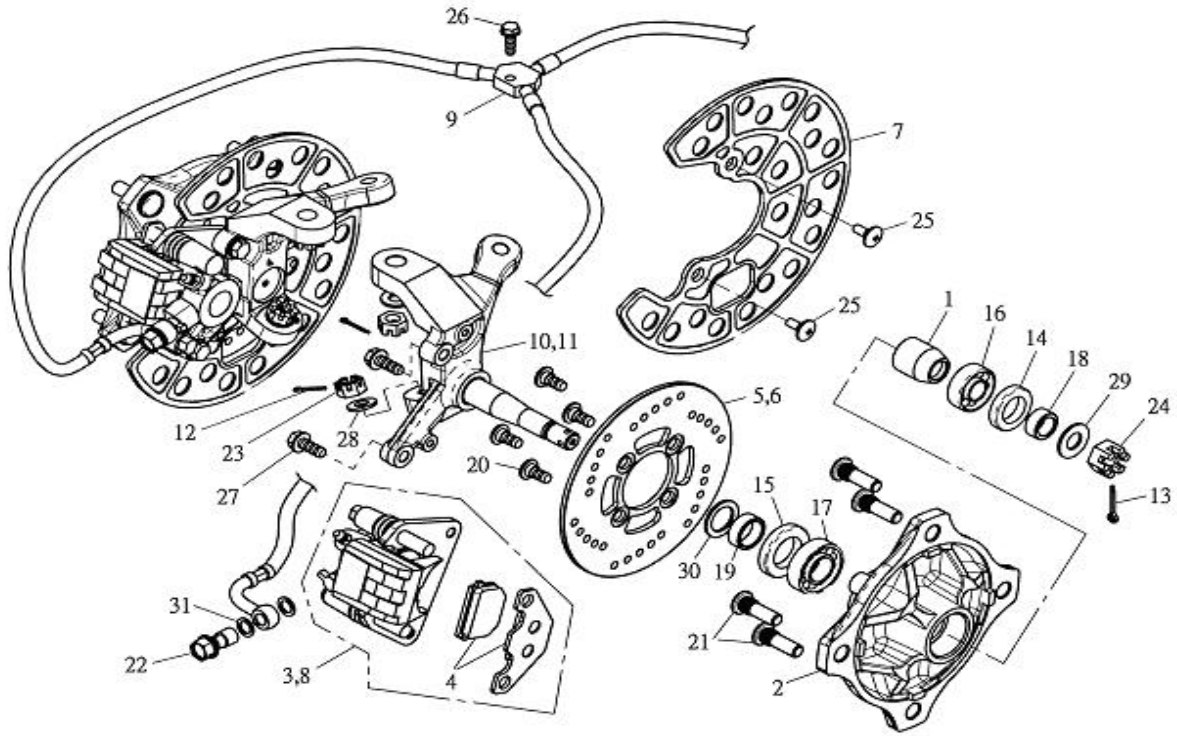
NO	PARTS NO.	PARTS NAME	Q'TY
1	13411-KHB-00	CASE,AIR CLEANER	1
2	13412-KHB-00	CAP,CLEANER CASE	1
3	13414-KHB-00	OIL CATCH ASS'Y	1
4	13432-KHB-00	SEAL,ELEMENT	1
5	13433-KHB-00	PLATE,ELEMENT SET	2
6	13451-KHB-00	ELEMENT,AIR CLEANER	1
7	13452-RAM-00	SEAL,AIR CLEANER COVER	1
8	13453-KHB-00	TUBE,AIR CLEANER JOINT	1
9	13454-KHB-00	JOINT,BLOW BY	1
10	90210-12010	CLIP	1
11	90210-12012	CLIP	1
12	90210-18014	CLIP	2
13	90210-18016	CLIP	2
14	90211-80012	CLIP	1
15	90260-80047	CLAMP,HOSE	1
16	90310-70195	TUBE,OIL CATCH	1
17	90310-110670	TUBE,OIL CATCH	1
18	90311-70060	TUBE,DRAIN	1
19	90311-100040	TUBE,DRAIN	1
20	96110-43518-K	SCREW,TAPPING	8
21	96310-06012-B	SCREW,PAN HEAD	2
22	96313-06020-K	SCREW,PAN HEAD WITH WASHER	4
23	96414-06012-B	BOLT,FLANGE	2
24	97201-061910-B	WASHER,PLATE	2



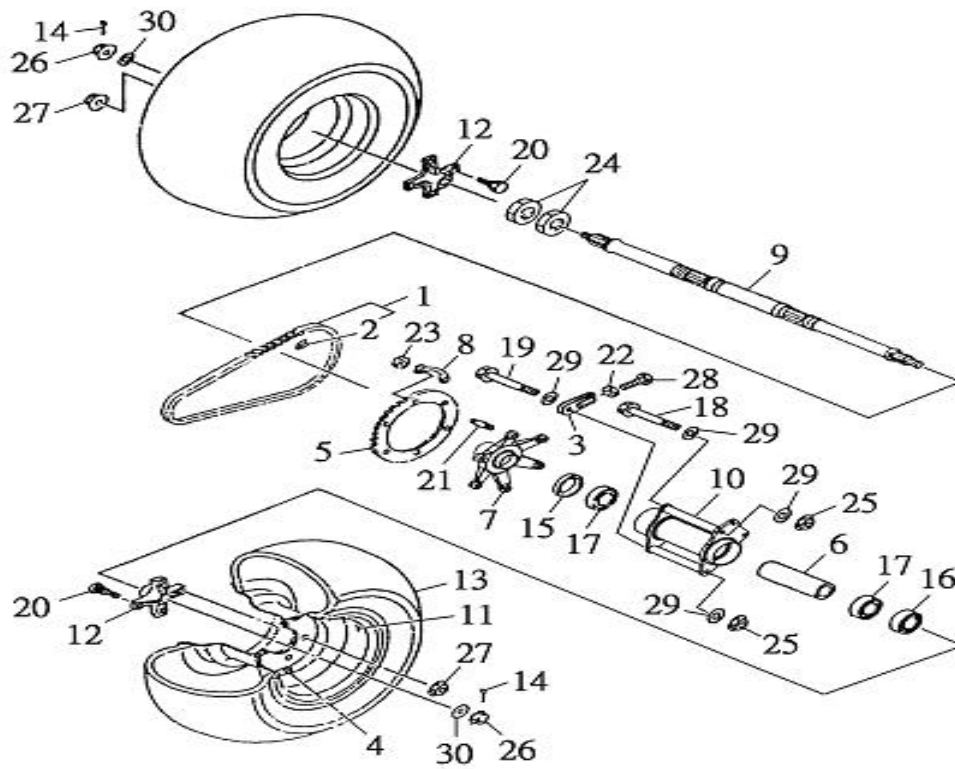
NO	PARTS NO.	PARTS NAME	Q'TY
1	52710-RAM-00	CATCH COMP,SEAT	1
2	52730-KHB-00	SINGLE SEAT ASS'Y-BAROSSA	1
3	90310-110027	HOSE	1
4	95401-061006-C	NUT,FLANGE	2



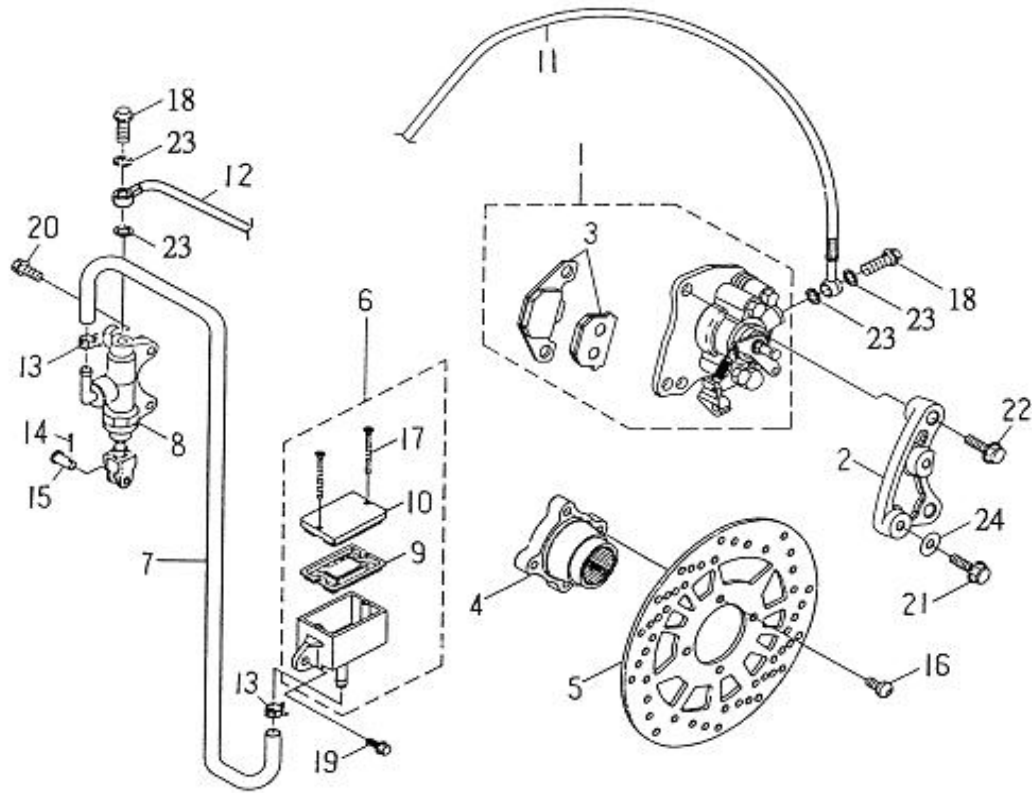
NO	PARTS NO.	PARTS NAME	Q'TY
1	42570-RAM-00	VALVE,RIM	2
2	42582-RAM-00	WHEEL,FRONT 10*5.5AT	2
3	42590-RAM-04	TIRE,FRONT AT21*7-10	2
4	95401-101409-C	NUT,FLANGE	8



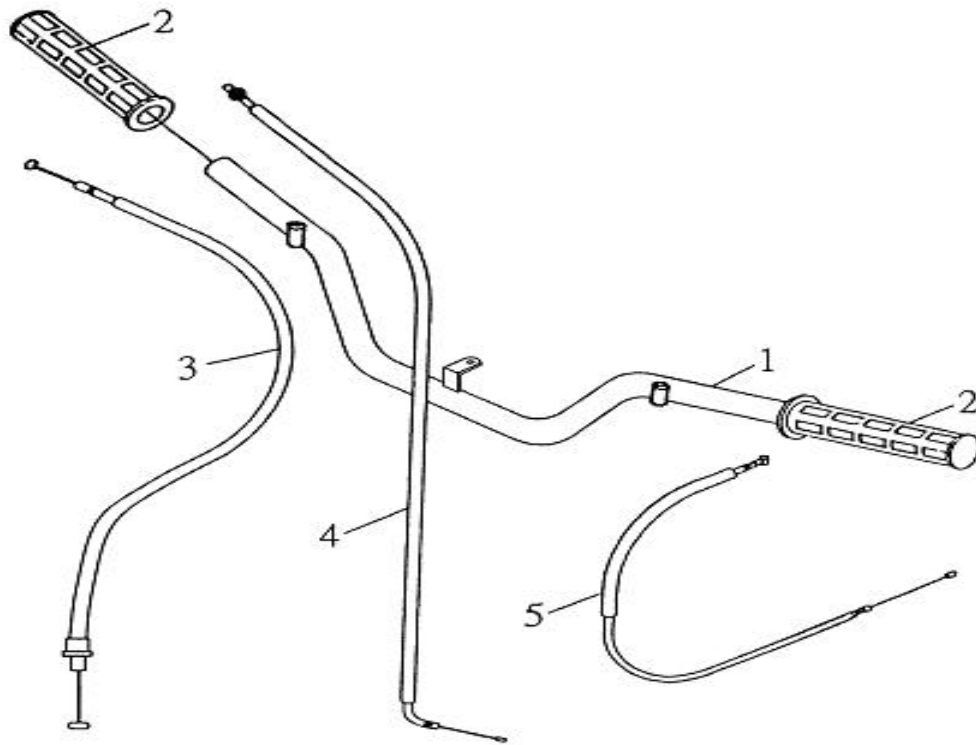
NO	PARTS NO.	PARTS NAME	Q'TY
1	42515-QUA-00	COLLAR	2
2	42581-QUA-00	HUB,FRONT	2
3	45510-QUA-00	LEFT FRONT CALIPER ASS'Y	1
4	45512-QUA-00	PAD,CALIPER	2
5	45514-QUA-00	LEFT FRONT BRAKE DISC	1
6	45515-QUA-00	RIGHT FRONT BRAKE DISC	1
7	45516-QUA-00	GUARD,BRAKE DISC	2
8	45520-QUA-00	RIGHT FRONT CALIPER ASS'Y	1
9	45533-KHB-00	THREE WAY HOSE,BRAKE	1
10	45860-QUA-00	KNUCKLE,STEERING L ASS'Y	1
11	45865-QUA-00	KNUCKLE,STEERING R ASS'Y	1
12	90240-23020-B	PIN,COTTER 2.3*20	4
13	90240-29025-B	PIN,COTTER 2.9*25	2
14	93110-22357	OIL SEAL SD22357	2
15	93110-26427	OIL SEAL SD26427	2
16	93320-153511Z	BEARING,RADIAL BALL 6202Z	2
17	93320-204212Z	BEARING,RADIAL BALL 6004Z	2
18	93510-152210-C	COLLAR	2
19	93510-202610-C	COLLAR	2
20	94706-08017-B	BOLT,BUTTON	8
21	94710-10032-C	BOLT,STUD	8
22	94716-10022-G	BOLT,UNION	2
23	95321-101710-C	NUT,CASTLE	4
24	95321-142215-C	NUT,CASTLE	2
25	96315-06016-C	SCREW	4
26	96414-06020-B	BOLT,FLANGE 6*20	1
27	96414-08020-B	BOLT,FLANGE 8*20	4
28	97201-102020-B	WASHER,COPPER 10*20*2.0	4
29	97201-142820-C	WASHER,PLATE 14*28*2.0	2
30	97201-213020-C	WASHER,PLATE 21*30*2.0	2
31	97230-101512	WASHER,COPPER 10.3*15*1.2	4



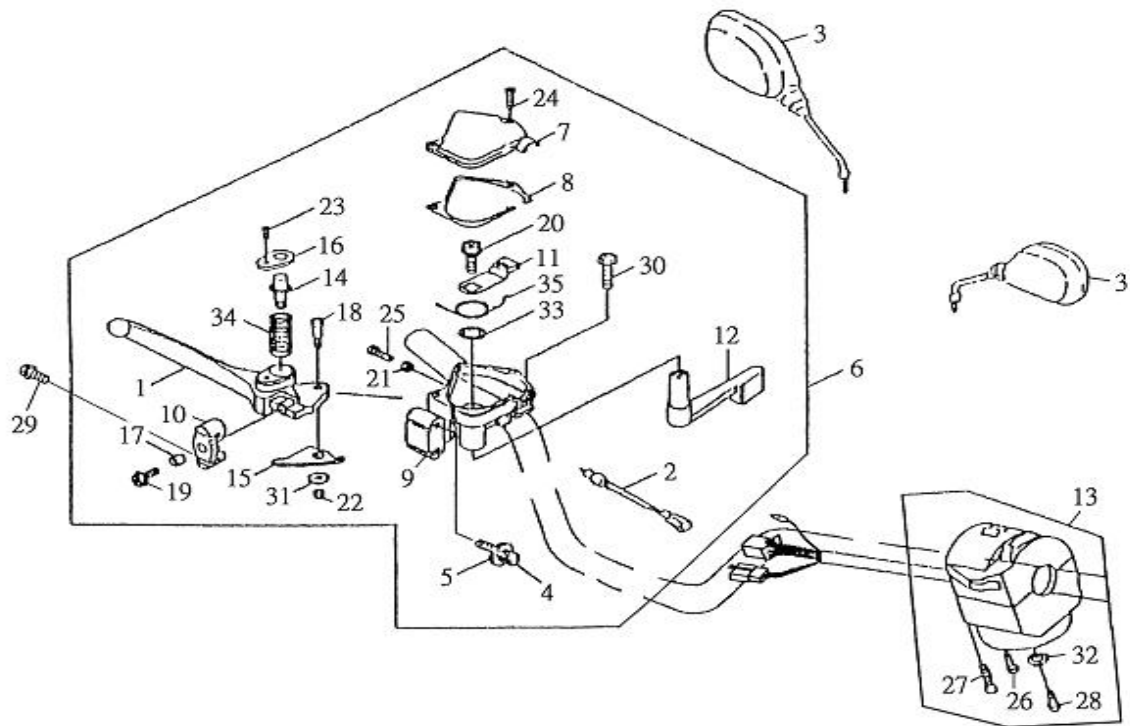
NO	PARTS NO.	PARTS NAME	Q'TY
1	25741-KHB-00	CHAIN 520H*98L	1
2	25742-RAM-00	JOINT,CHAIN	1
3	32120-RAM-00	ADJUSTER,CHAIN	2
4	42570-RAM-00	VALVE,RIM	2
5	42812-RAM-00	SPROCKET,DRIVEN 40T	1
6	42815-RAM-00	SPACKER,BEARING	1
7	42821-RAM-00	COLLAR,SPROCKET AXLE	1
8	42823-RAM-00	WASHER,LOCK	3
9	42835-RAM-01	AXLE,WHEEL	1
10	42881-KHB-00	HUB,REAR	1
11	42882-RAM-00	WHEEL,REAR 8*8.0AT	2
12	42885-RAM-00	COLLAR,WHEEL	2
13	42890-RAM-05	TIRE,REAR AT21*10-8	2
14	90240-29025-B	PIN,COTTER 2.9*25	2
15	93110-42628	OIL SEAL 42*62*8	1
16	93110-44628	OIL SEAL 44*62*8	1
17	93320-356214	BEARING,RSDIAL BALL 6007RS	2
18	94610-10174-B	BOLT	1
19	94610-10178-B	BOLT	1
20	94710-10032-C	BOLT,STUD	8
21	94717-08028-C	BOLT,STUD	6
22	95201-081207-B	NUT,HEXAGON	2
23	95201-081406-B	NUT,HEXAGON	6
24	95201-335014-C	NUT,HEXAGON	2
25	95301-101410-B	NUT,LOCK	2
26	95326-142114-C	NUT,CASTLE FLANGE	2
27	95401-101409-C	NUT,FLANGE	8
28	96210-08055-B	BOLT,HEXAGON	2
29	97201-102620-B	WASHER,PLATE 10.3*26*2.0	4
30	97201-143240-C	WASHER,PLATE 14.2*32.5*4.0	2



NO	PARTS NO.	PARTS NAME	Q'TY
1	45801-KHB-00	PARKING BRAKE CALIPER ASS'Y	1
2	45810-KHB-00	BRACKET,CALIPER	1
3	45815-QUA-00	PAD,CALIPER	1
4	45830-RAM-00	BRACKET,DISC	1
5	45831-RAM-00	DISC,BRAKE	1
6	45871-RAM-00	RESERVOIR	1
7	45874-KHB-00	HOSE 8*13*200	1
8	45877-KHB-00	CYLINDER KIT,MASTER	1
9	45878-NAF-00	DIAPHRAGM,RESERVOIR	1
10	45879-NAF-00	CAP,RESERVOIR	1
11	61320-KHB-00	HOSE,BRAKE	1
12	61321-KHB-00	HOSE,BRAKE	1
13	90220-80013	CLAMP	2
14	90230-12008	COTTER PIN	1
15	94610-06016-B	PIN,CLEVIS	1
16	94706-08017-B	BOLT,BUTTON 8*17	4
17	94712-04040-K	SCREW,FLAT HEAD	2
18	94716-10022-G	BOLT,UNION	2
19	96414-06016-B	BOLT,FLANGE	1
20	96414-06022-B	BOLT,FLANGE	2
21	96414-08020-B	BOLT,FLANGE	2
22	96414-10028-B	BOLT,FLANGE	2
23	97230-101512	WASHER,COPPER 10.3*15*1.2	4
24	97301-081420-B	WASHER,SPRING	2

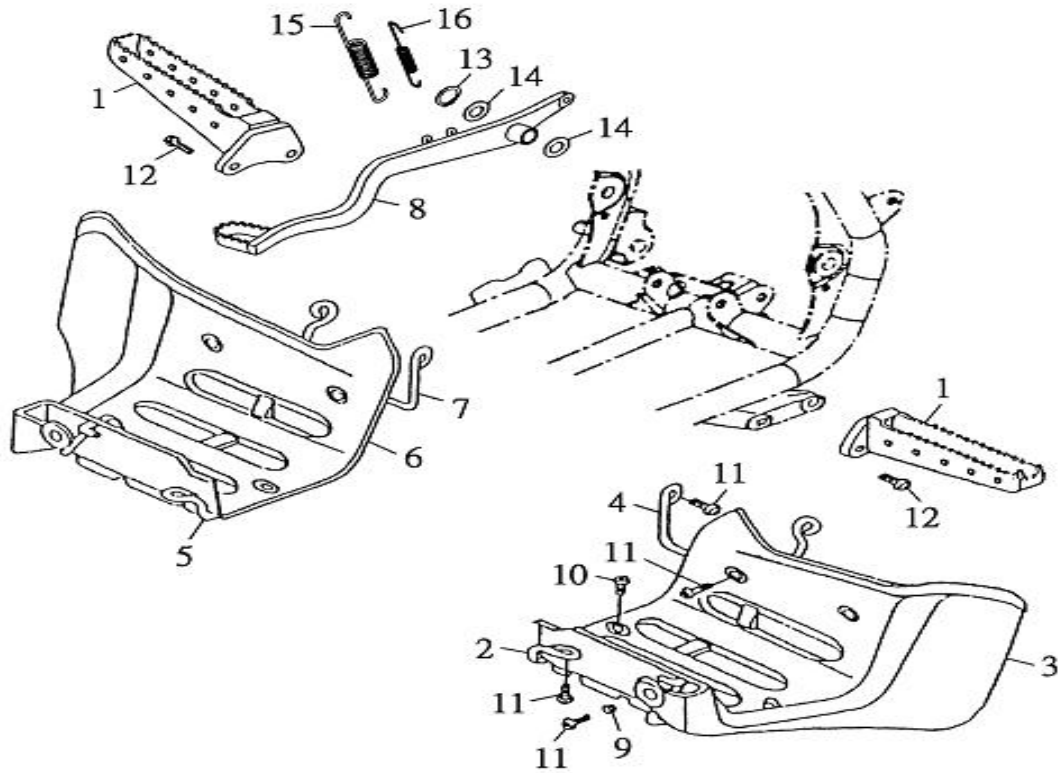


NO	PARTS NO.	PARTS NAME	Q'TY
1	46110-KHB-00	HANDLEBAR	1
2	46240-RAM-00	GRIP	2
3	61813-KHB-00	CABLE,PARKING BRAKE	1
4	61620-KHB-00	CABLE,THROTTLE	1
5	61720-KHB-00	CABLE,CHOKE	1

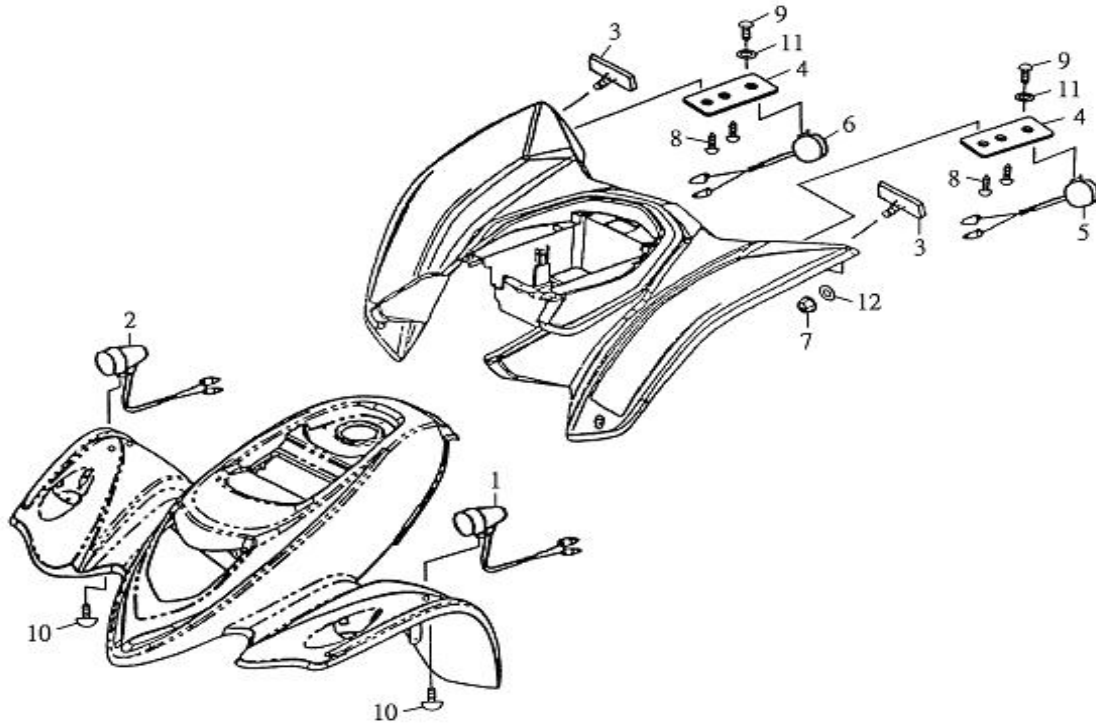


NO	PARTS NO.	PARTS NAME	Q'TY
1	45872-RAM-00	LEVER,R	1
2	45890-RAM-00	WIRING,FR STOP SWITCH	1
3	56270-KHB-00	MIRROR ASS'Y,BACK	1
4	62916-RAM-00	BOLT,WIRE ADJUSTING	1
5	62917-RAM-00	NUT,WIRE ADJUSTING	1
6	62920-RAM-01	THROTTLE LEVER ASS'Y	1
7	62923-RAM-00	CAP,THROTTLE	1
8	62924-RAM-00	GASKET,THROTTLE	1
9	62925-RAM-00	THROTTLE LEVER	1
10	62926-RAM-00	JOINT,CABLE	1
11	62927-RAM-00	ARM,THROTTLE	1
12	62928-RAM-00	LEVER,THROTTLE	1
13	62930-KHB-00	HANDLE SWITCH ASS'Y L	1
14	62971-RAM-00	PIN,LOCK	1
15	62973-RAM-00	LOCK,LEVER	1
16	62976-RAM-00	COVER	1
17	93560-68507	COLLAR,LEVER 6.3*8.5*7.4	1
18	94710-05022-G	BOLT,LEVER	1
19	94714-06016-G	BOLT	1
20	94714-08012-G	BOLT	1
21	95201-050804-G	NUT,HEXAGON	1
22	95311-050805-K	NUT,NYLON	1
23	96310-03008-B	SCREW,PAN HEAD	1
24	96310-04015-G	SCREW,PAN HEAD	2
25	96310-05015-G	SCREW,PAN HEAD	1
26	96310-05030-G	SCREW,PAN HEAD	1
27	96310-05040-G	SCREW,PAN HEAD	1
28	96310-06010-G	SCREW,PAN HEAD	1
29	96414-06012-K	BOLT,FLANGE	1
30	96510-06020-G	BOLT	2
31	97201-051516-C	WASHER,PLATE 5.3*15*1.6	1
32	97201-061310-B	WASHER,PLATE 6.5*13*1.0	1

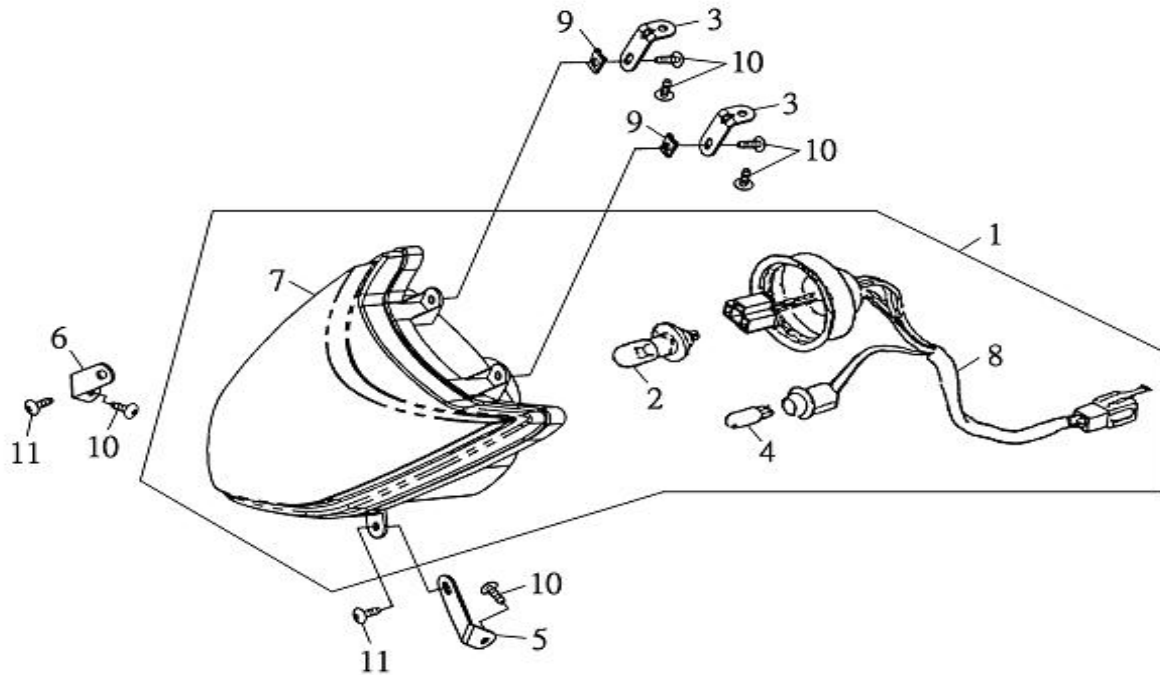
33	97201-142016-C	WASHER,PLATE 14.2*19.7*1.6	1
34	97501-08025-B	SPRING	1
35	97508-10240-B	SPRING	1



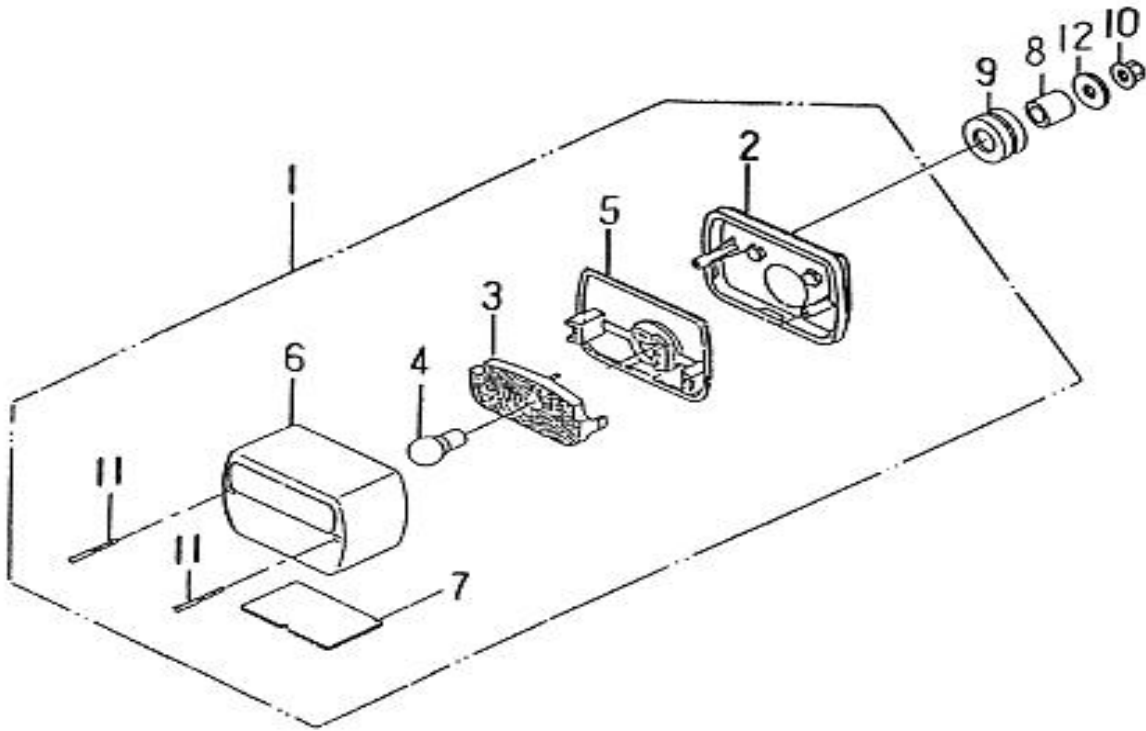
NO	PARTS NO.	PARTS NAME	Q'TY
1	53231-KHB-00	FOOTREST	2
2	53233-RAM-00	MUDGUARD STAY L1	1
3	53234-RAM-00	MUDGUARD L	1
4	53236-KHB-00	MUDGUARD STAY L2	1
5	53243-RAM-00	MUDGUARD STAY R1	1
6	53244-RAM-00	MUDGUARD R	1
7	53246-KHB-00	MUDGUARD STAY R2	1
8	53261-KHB-00	PEDAL,BRAKE	1
9	95401-061006-B	NUT,FLANGE	1
10	96318-06012-B	SCREW,PAN HEAD	6
11	96318-06015-B	SCREW,PAN HEAD	8
12	96414-10025-B	BOLT,FLANGE	4
13	97010-14010-K	CIRCLIP 14*1.0	1
14	97201-152620-B	WASHER,PLATE	2
15	97506-12073-B	SPRING,TENSION	1
16	97506-18100-B	SPRING,TENSION	1



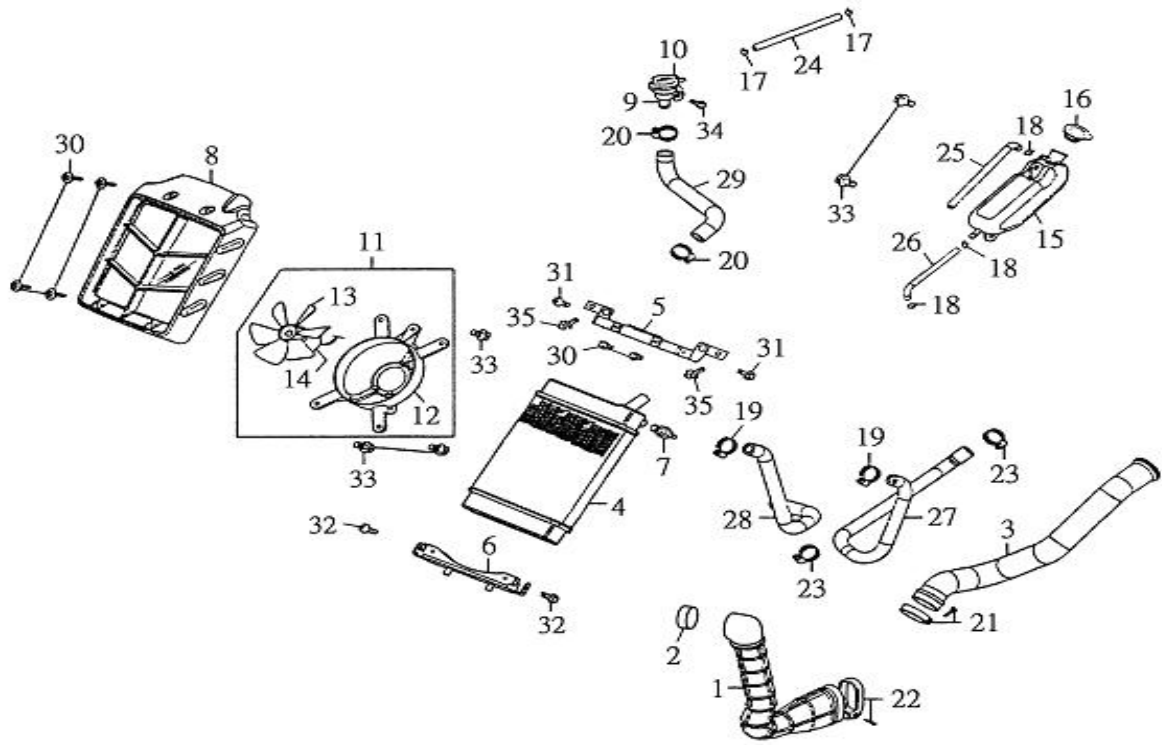
NO	PARTS NO.	PARTS NAME	Q'TY
1	55350-KHB-00	WINKER ASS'Y,L FRONT	1
2	55360-KHB-00	WINKER ASS'Y,R FRONT	1
3	55722-SAF-00	REFLECTOR	2
4	55736-KHB-00	STAY,REAR WINKER	2
5	55750-KHB-00	WINKER ASS'Y,L REAR	1
6	55760-KHB-00	WINKER ASS'Y,R REAR	1
7	95401-061006-B	NUT,FLANGE	2
8	96112-51216-K	SCREW,TAPPING	4
9	96310-05012-B	SCREW,PAN HEAD 5*12	2
10	96318-06015-B	SCREW,PAN HEAD 6*15	2
11	97201-051610-B	WASHER,PLATE 5.3*16*1	2
12	97301-061215-B	WASHER,SPRING 6*11.5*1.5	2



NO	PARTS NO.	PARTS NAME	Q'TY
1	55300-KHB-00	HEAD LIGHT ASS'Y	1
2	55314-KHB-00	BULB,HEAD LIGHT 12V35/35W (F4)	1
3	55315-KHB-00	STAY,HEAD LIGHT	2
4	55316-NGF-00	BULB,POSITION LAMP	1
5	55317-KHB-00	STAY,HEAD LIGHT L	1
6	55318-KHB-00	STAY,HEAD LIGHT R	1
7	55320-KHB-00	LENS ASS'Y	1
8	55340-KHB-00	SOCKET CORD ASS'Y	1
9	95101-05012	NUT,SPRING	2
10	96112-51616-K	SCREW,TAPPING	6
11	96310-05012-B	SCREW,PAN HEAD	2

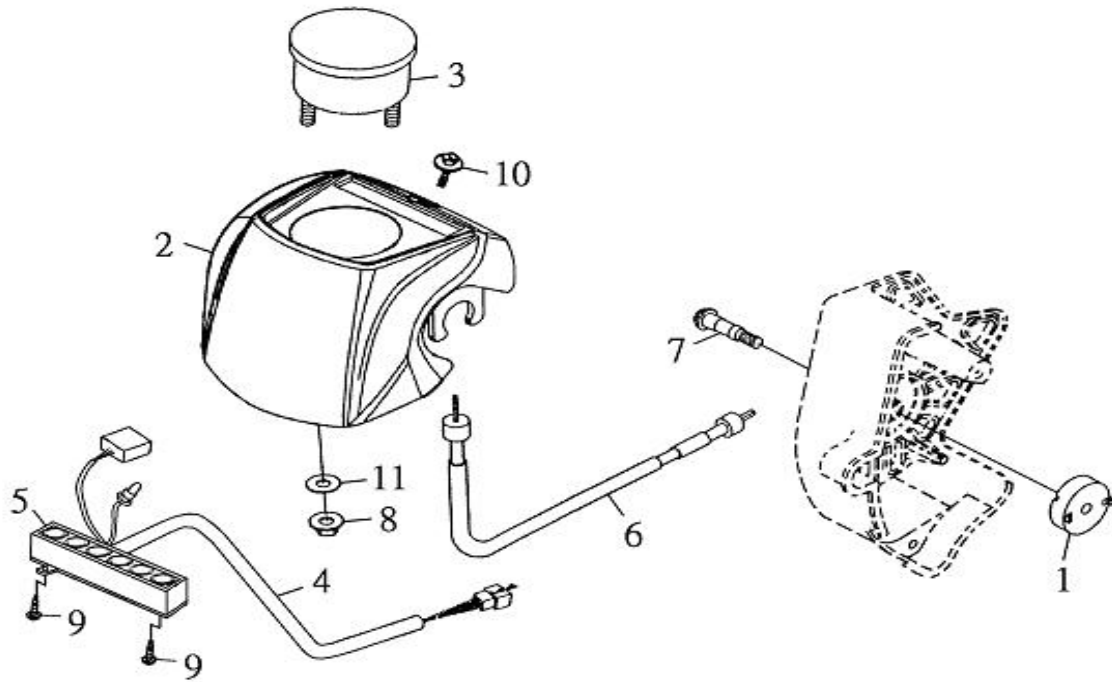


NO	PARTS NO.	PARTS NAME	Q'TY
1	55700-CHP-01	TAIL LIGHT ASS'Y	1
2	55701-CHP-00	STAND,TAIL LIGHT	1
3	55713-PAF-00	BULB STAND,TAIL LIGHT	1
4	55714-PAF-00	BULB, TAIL LIGHT	1
5	55715-PAF-00	WASHER	1
6	55721-PAF-01	LENS,TAIL LIGHT	1
7	55743-PAF-00	LENS,LICENSE LIGHT	1
8	93510-061010	COLLAR	2
9	93580-102212	GROMMET	2
10	95401-061006-B	NUT,FLANGE	2
11	96112-43818-B	SCREW,TAPPING	2
12	97201-061820-B	WASHER,PLATE	2

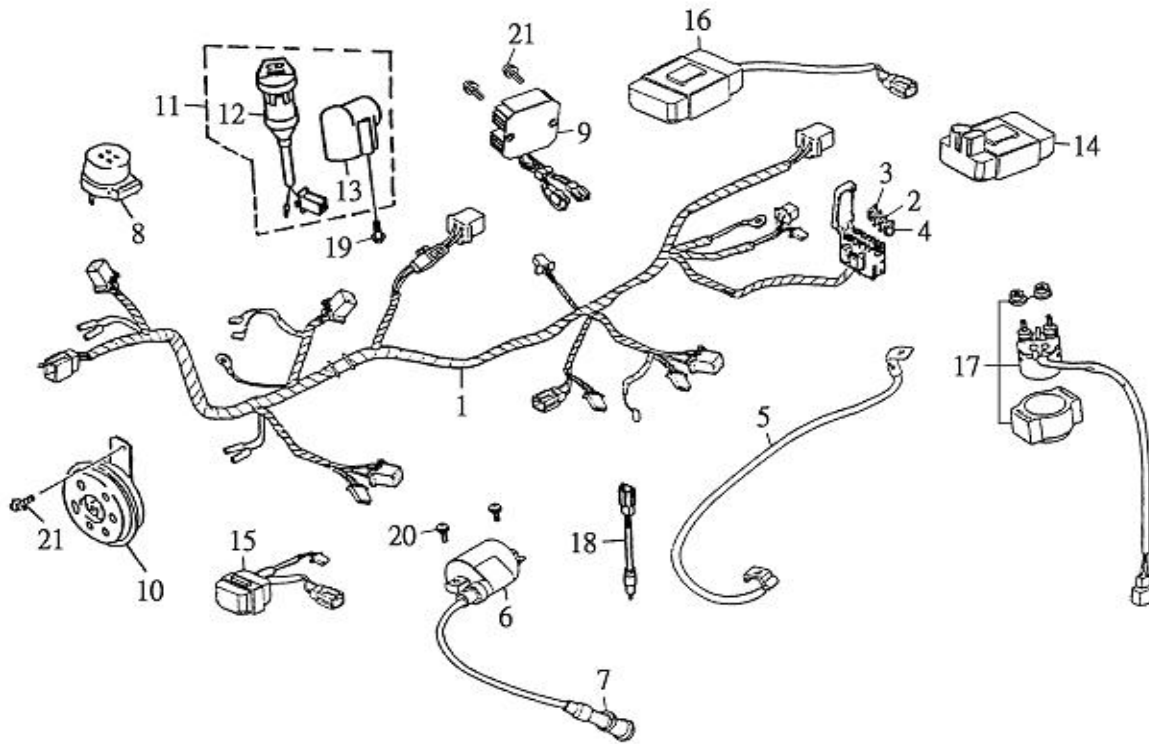


NO	PARTS NO.	PARTS NAME	Q'TY
1	51181-KHB-00	LEFT AIR INTAKE DUCT	1
2	51182-KHB-00	ELEMENT, AIR INTAKE DUCT	1
3	51183-KHB-00	LEFT AIR OUTTAKE DUCT	1
4	61900-KHB-00	RADIATOR COMP.	1
5	61901-KHB-00	RADIATOR UP STAY	1
6	61902-KHB-00	RADIATOR BOTTOM STAY	1
7	61903-KHB-00	THERMO SWITCH ASSY.	1
8	61904-KHB-00	RADIATOR SHROUD	1
9	61905-KHB-00	RADIATOR UNIT	1
10	61906-KHB-00	RADIATOR CAP	1
11	61930-KHB-00	COOLING FAN & MOTOR	1
12	61931-KHB-00	COOLING FAN SHROUD	1
13	61932-KHB-00	COOLING FAN	1
14	61933-KHB-00	MOTOR ASSY. FAN	1
15	61940-KHB-00	RESERVED TANK	1
16	61942-KHB-00	RESERVED TANK CAP	1
17	90210-10006	CLIP	2
18	90211-80010	CLIP	3
19	90211-120020	CLIP	2
20	90211-120023	CLIP	2
21	90261-100050	CLAMP,DUCT	1
22	90261-100080	CLAMP,DUCT	1
23	90262-130027	CLIP	2
24	90310-30400	RADIATOR WATER HOSE	1
25	90310-50095	HOSE ASSY. DRAIN	1
26	90310-60850	RESERVED TANK HOSE	1
27	90310-140570	RADIATOR WATER HOSE	1
28	90310-140600	RADIATOR WATER HOSE	1
29	90310-180340	RADIATOR WATER HOSE	1
30	96318-05010-K	BOLT-WASH 5*12	4
31	96411-06012-C	SCREW,PAN HEAD	4
32	96411-06016-C	BOLT WASHER 6*16	2

33	96411-06020-C	BOLT WASHER 6*20	3
34	96414-06012-B	BOLT FLANGE 6*12	3
35	96414-06020-B	BOLT FLANGE 6*20	2



NO	PARTS NO.	PARTS NAME	Q'TY
1	42566-KHB-00	GEAR PLATE	1
2	55213-KHB-00	PROTECTOR,HANDLEBAR	1
3	55510-KHB-00	SPEEDOMETER ASS'Y	1
4	55512-KHB-00	PILOT LAMP COMP	1
5	55513-KHB-00	STAY PILOT LAMP	1
6	61520-KHB-00	CABLE,SPEEDOMETER ASS'Y	1
7	94706-08045-B	PIN,GEAR UNIT	1
8	95401-050805-B	NUT,FLANGE	2
9	96112-31018-C	SCREW,TAPPING	4
10	96312-06016-K	SCREW,PAN HEAD WITH WASHER	1
11	97201-051610-B	WASHER,PLATE 5.3*16*1	2




NO	PARTS NO.	PARTS NAME	Q'TY
1	61120-KHB-00	HARNES WIRE	1
2	61151-KHB-00	BLADE FUSE 10A	1
3	61151-KHB-01	BLADE FUSE 15A	2
4	61151-KHB-02	BLADE FUSE 30A	1
5	62110-KHB-00	CABLE BAT	1
6	62310-KHB-00	COIL ASSY. IGNITION	1
7	62320-KHB-00	CAP ASSY. NOISE SUPPRESOR	1
8	62350-KHB-00	FLASHER RELAY ASSEMBLY	1
9	62360-KHB-00	REGTIFIER®ULATOR COMP.	1
10	62370-NAF-00	HORN	1
11	62500-KHB-00	KEY SET	1
12	62501-KHB-00	KEY SET	1
13	62503-RAM-00	LOCK COMP,STEERING HANDLE	1
14	62520-KHB-00	CONTROL ASSY. GEAR CHANGE	1
15	62530-KHB-00	EMI FILTER	1
16	62540-KHB-00	UNIT ASSY. IGNITION	1
17	62550-KHB-00	SET START MAG	1
18	62980-CHP-00	SWITCH ASS'Y,REAR STOP	1
19	96310-05012-B	SCREW,PAN HEAD 5*12	2
20	96310-05018-B	SCREW,PAN HEAD 5*18	2
21	96312-06016-K	SCREW,PAN HEAD WITH WASHER	3

▲ WARNING

Improper tire pressure or overloading can cause loss of control. Loss of control can result in severe injury or death.

- Cold tire pressure
 - Front 44 psi 0.30 kgf/cm²
 - Rear 36 psi 0.25 kgf/cm²
- Maximum weight capacity 330kg

▲ WARNING




Operating this ATV if you are under the age of 16 increases your chance of severe injury or death.


NEVER operate this ATV if you are under age 16.

▲ WARNING

Improper ATV use can result in SEVERE INJURY or DEATH.



ALWAYS USE AN APPROVED HELMET AND PROTECTIVE GEAR



NEVER USE WITH ALCOHOL OR DRUGS

NEVER operate:

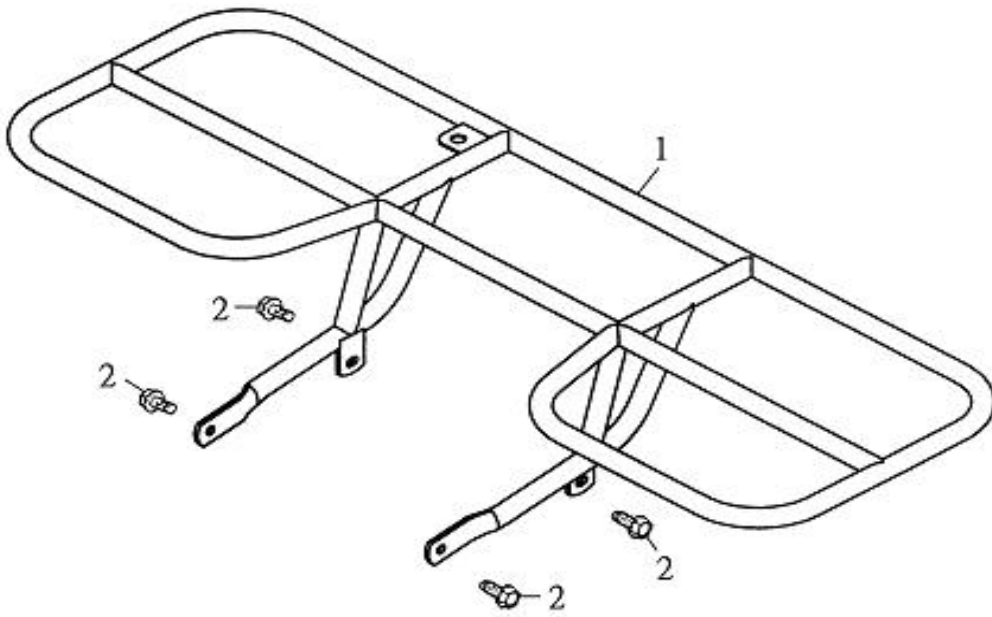
- without proper training or instruction.
- at speeds too fast for your skills or the conditions.
- do not operate the vehicle after consuming ALCOHOL OR DRUGS.

ALWAYS:

- use proper riding techniques to avoid vehicle overturns on hills and rough terrain and in turns.
- for your safety, wear gear to include helmet gloves and foot protection.
- gasoline is flammable. shut off engine, avoid sparks and open flame when refueling.

READ OWNER'S MANUAL, FOLLOW ALL INSTRUCTIONS AND WARNINGS.

NO	PARTS NO.	PARTS NAME	Q'TY
1	56576-KHB-00	LABEL WARNING 3 (Tire)	1
2	56578-KHB-00	LABEL WARNING 2 (Ags)	1
3	56781-KHB-00	LABEL WARNING 1 (Operation)	1



NO	PARTS NO.	PARTS NAME	Q'TY
1	52850-KHB-00	CARRIER,REAR	1
2	96414-08012-B	BOLT,FLANGE	4